

# Welcome!

## Project Description

The project area is located West of S. 48th Street and Giles Street near Hastings Banner Park in Bellevue, Sarpy County, Nebraska. The project limits extend approximately 300 feet north and 2,400 feet south of the Copper Creek aerial pipe crossing and located on the east side of the Big Papillion Creek.

The project will relocate the existing interceptor, which includes the aerial pipe crossing over Copper Creek, to the east by approximately 200-feet and connect back into the existing system. The proposed improvements include removing the existing, exposed sewer pipe and installing a multi-pipe siphon.

The project will prevent backflow into the collection system, will replace aged infrastructure, and will aid in reducing potential floodplain impacts. Other project improvements involve the following:

- Streambank stabilization of Copper Creek
- Temporary by-pass pumping
- Pavement and trail replacement
- Restoration of disturbed areas

## Pedestrian Trail Closure

Part of the Keystone Trail will be closed during the months of January, February and March of 2024. "Trail Closed" and "Trail Closed Ahead" signs will be placed upstream and downstream of the work site on Keystone Trail. Also, pre-warning signs will be placed on Giles/Copper Creek connector trails entrances from local residential areas and the Bellevue Parks.

## Funding

The funding sources for the project are the FEMA's Hazard Mitigation Grant Program and the Nebraska Department of Economic Development Community Development Block Grant Disaster Recovery (CDBG-DR) grant funds. The project will be fully funded between both grants.

## Project Location Map



## Pedestrian Trail Closure

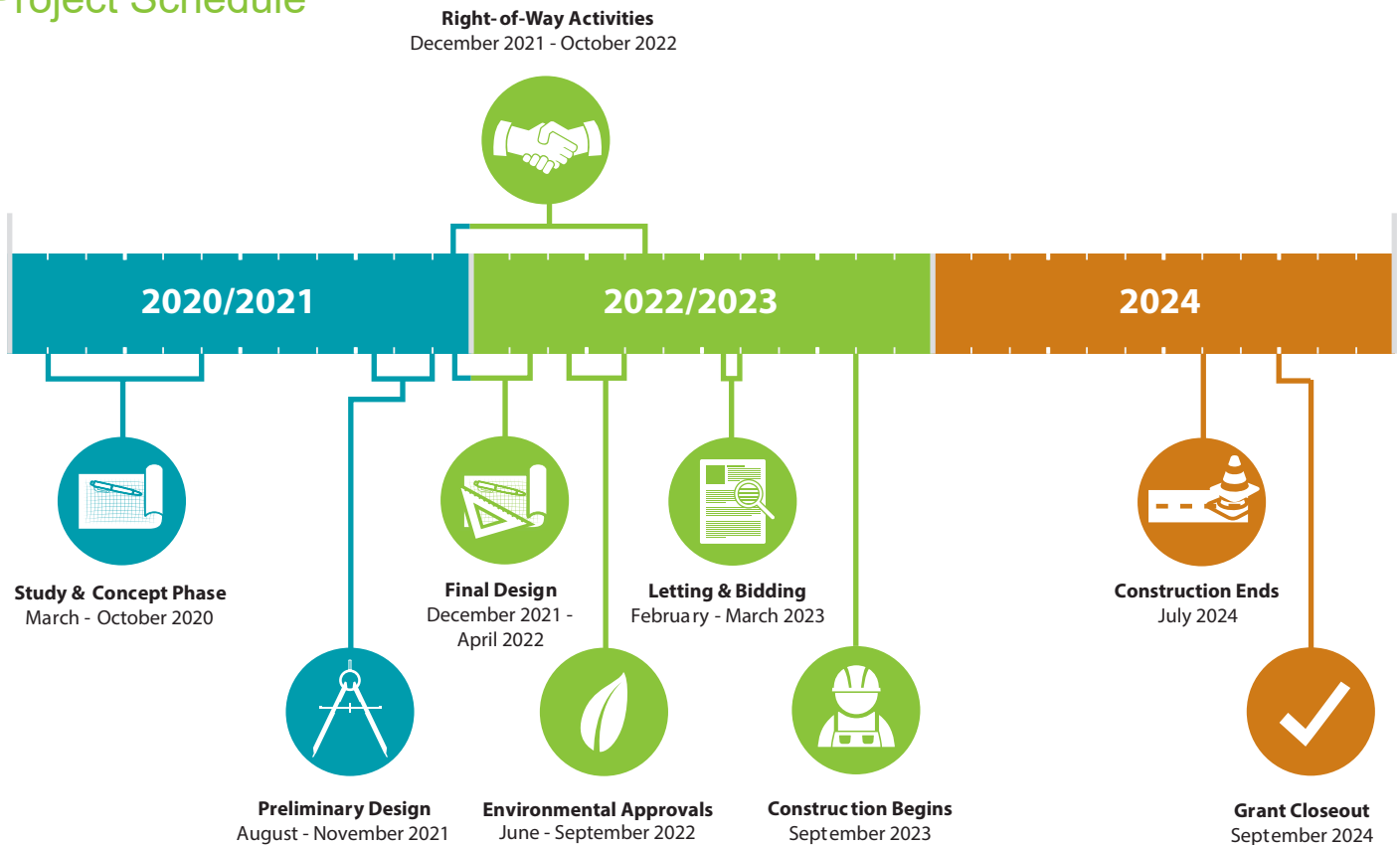


## Potential Impacts

The project will impact four property owners: the Papio-Missouri River Natural Resources District, the City of Bellevue, and two farmlands. The City of Omaha began communication with these property owners in April 2020. The project will permanently and temporarily impact wetlands and the stream channel. Other impacts are to the floodway and levees from the proposed sewer relocation. Coordination with the U.S. Army Corps of Engineers and Papio-Missouri River Natural Resources District occurred during design. Permits and approvals were received by both agencies regarding the wetland, channel and levee disturbances. The City of Bellevue reviewed and approved a flood plain development permit for the project.

Tree removal could potentially impact northern long-eared bat and migratory bird habitat. To mitigate this, no tree removal is permitted from June 1st to July 31st. If trees are removed between April 1st and June 1st or between July 31st and September 1st, a survey of nesting migratory birds must be performed.

## Project Schedule



# We want your input!

There are several opportunities to provide input or ask questions of the Project team:

 Complete a comment form at today's meeting



Email us:  
[info@KeepItCurrentOmaha.com](mailto:info@KeepItCurrentOmaha.com)

For more information on this Project, to review materials from today, or to comment online, please visit [KeepItCurrentOmaha.com](http://KeepItCurrentOmaha.com)

City of Omaha  
1819 Farnam St.  
Omaha, NE 68183

