

AGENDA

- Contractor Outreach - Project Overview -
 - Introductions
 - Project Overview
 - 4 Construction Packages
 - 2 Construction Packages – 11th and Izard corridor
 - Schedules
 - 11th and Izard – Project Schedules
 - Site Conditions & Constraints
 - Site Review – Adjacent Facilities
 - Project Conceptual Designs
 - Major Risks
 - Project Schedules and Phasing
 - Contractor – constructability thoughts/suggestions

Project Overview

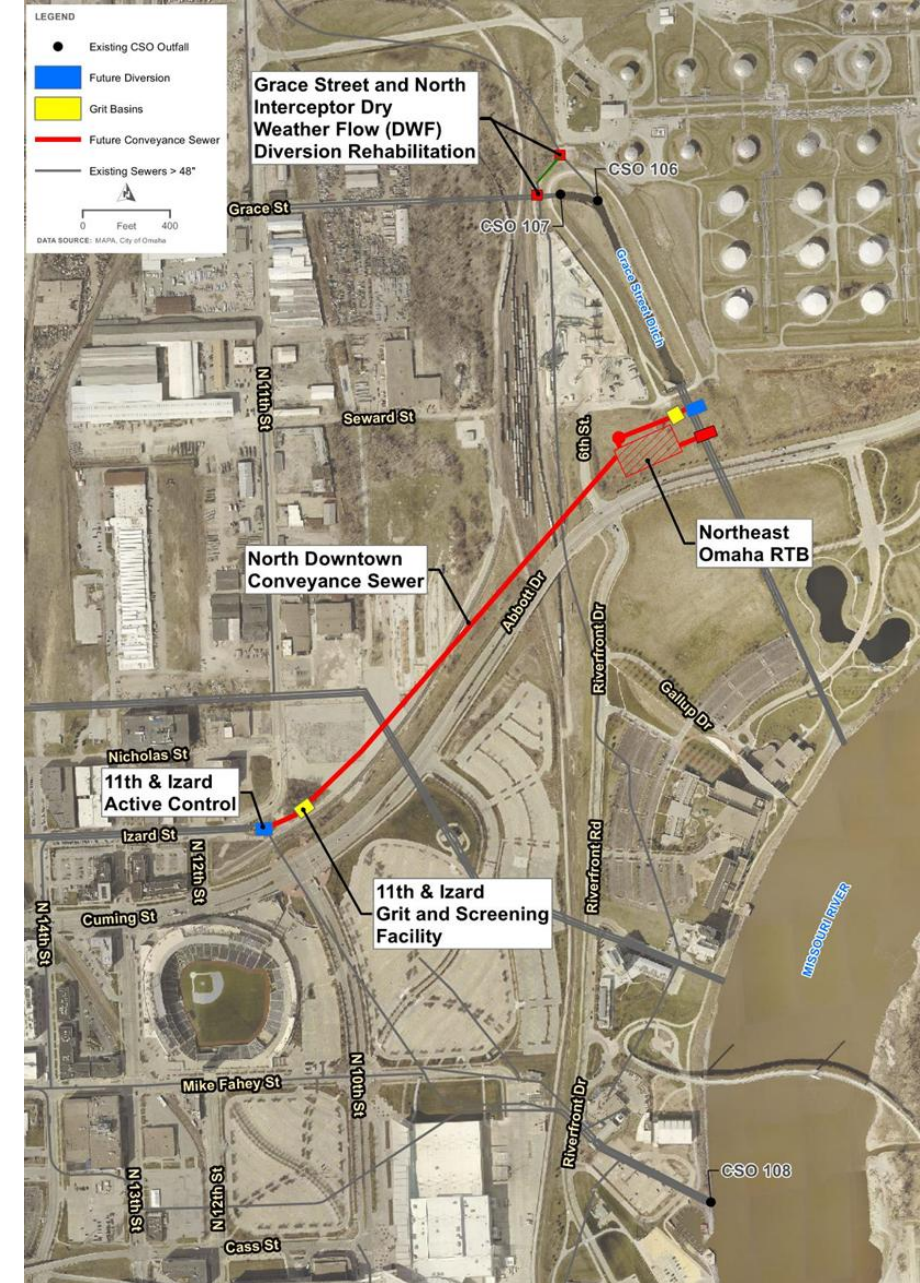
Project Overview

- The City of Omaha, in accordance with their Long Term CSO Control Plan Update, are developing a plan to build the 185 MGD Northeast Omaha (NEO) High-Rate Treatment Basin which will address sewer overflows at CSOs 106, 107 and 108.



Project Elements

- 11th & Izard Diversion Structure
- 11th & Izard Grit and Screening Facility
- North Downtown Conveyance Sewer – 11th & Izard to 6th and Abbott
- Grace Street and North Interceptor Dry Weather Flow Diversion Rehabilitation
 - Grace Street Diversion Structure
 - Grace Street Grit and Screening Facility
- Northeast Omaha HRTB at 6th Street & Abbott Drive
 - Grace Street Diversion Structure
 - Grace Street Grit and Screening Facility

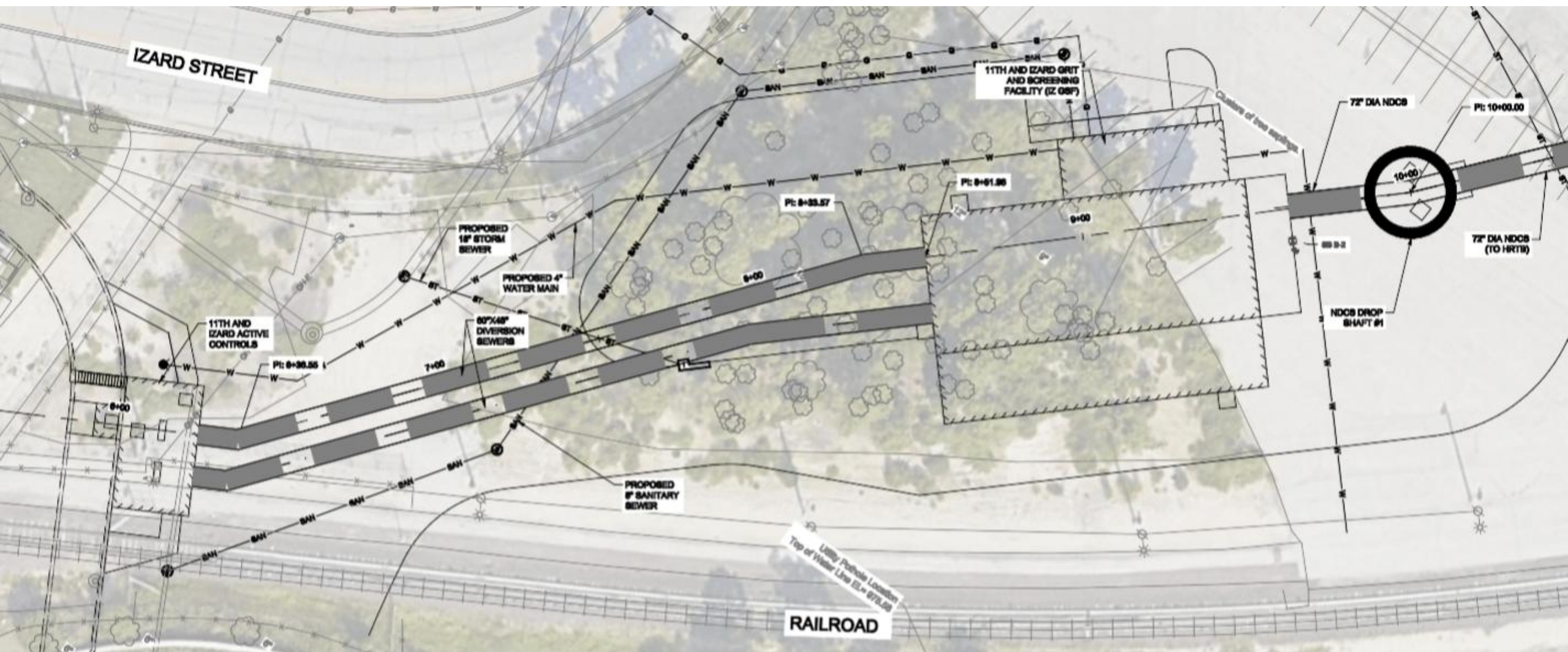


Developers/Union Omaha/Soccer Stadium

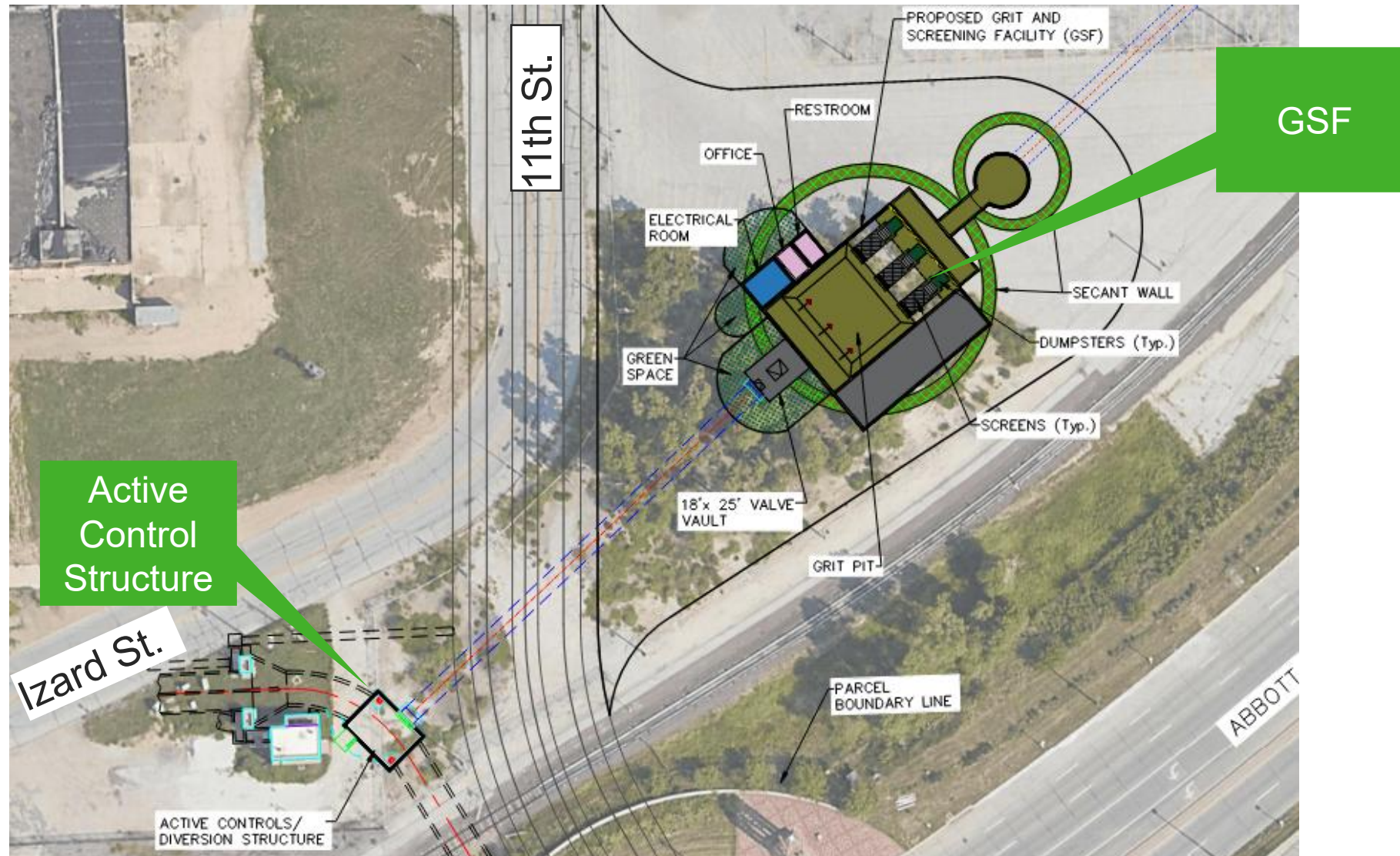
- Design Coordination
 - Union Omaha
 - Hines
 - Mayor's Office (Marco/Jennifer)
 - 11th Street Connector Team
- Complete all MAJOR construction activities on the former UPRR site by end of 2027



11th/Izard Active Control and GSF Site Plan

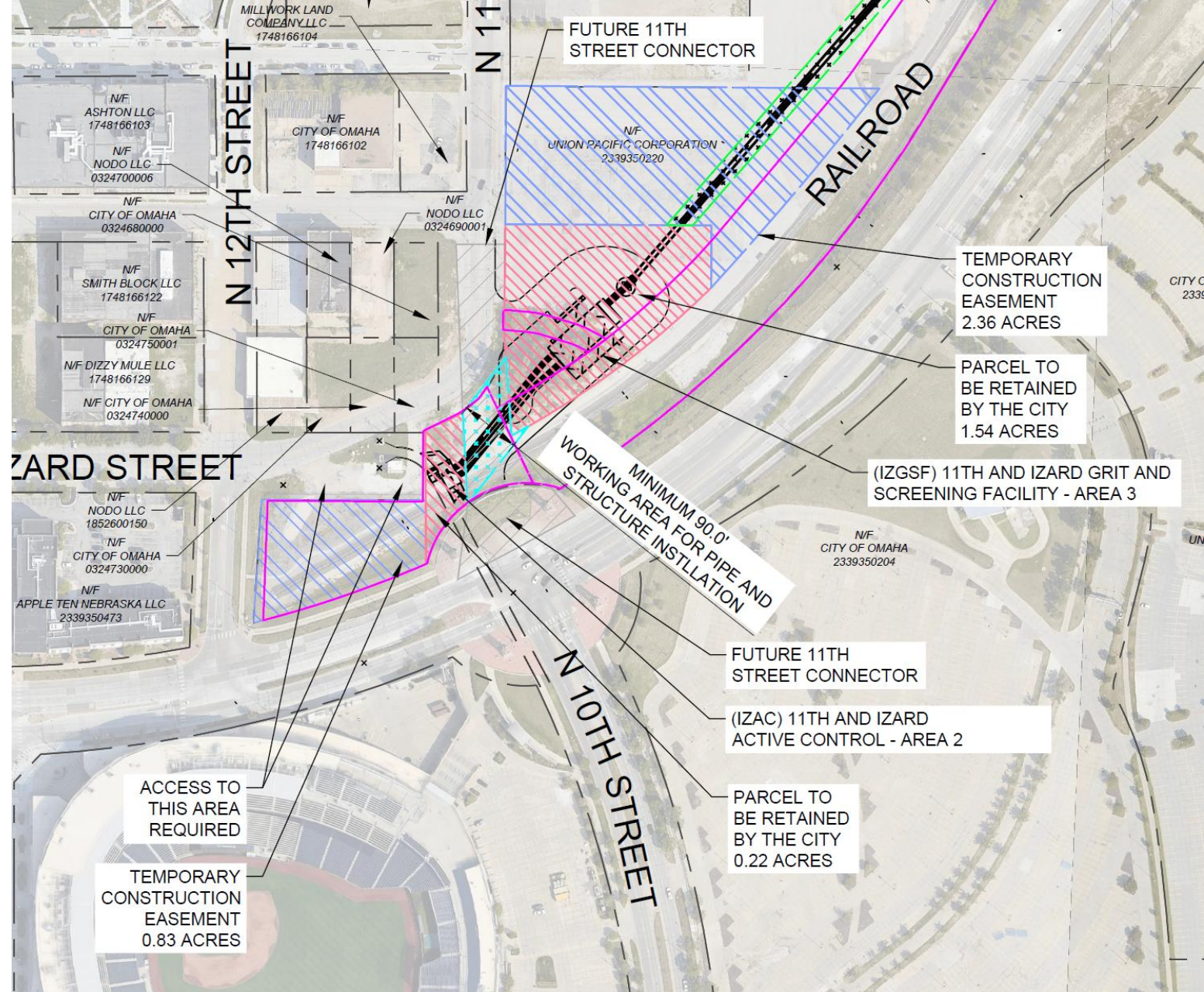


11th/Izard Active Control and GSF Site Plan



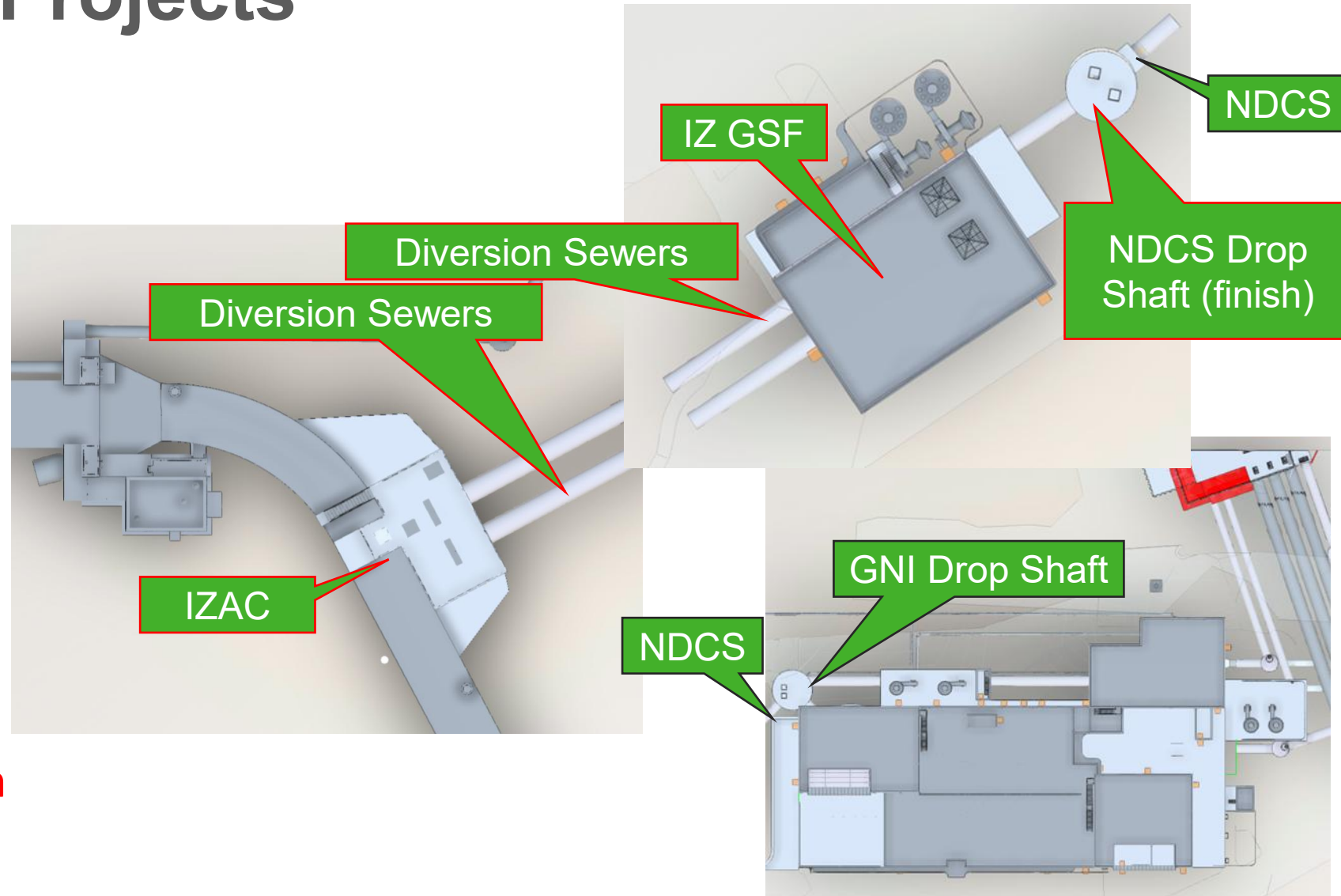
Staging Areas

- 11th and Izard Active Control (IZAC)
 - laydown area to southwest
- 11th and Izard Grit and Screening Facility (IZ GSF)
 - laydown area to the north

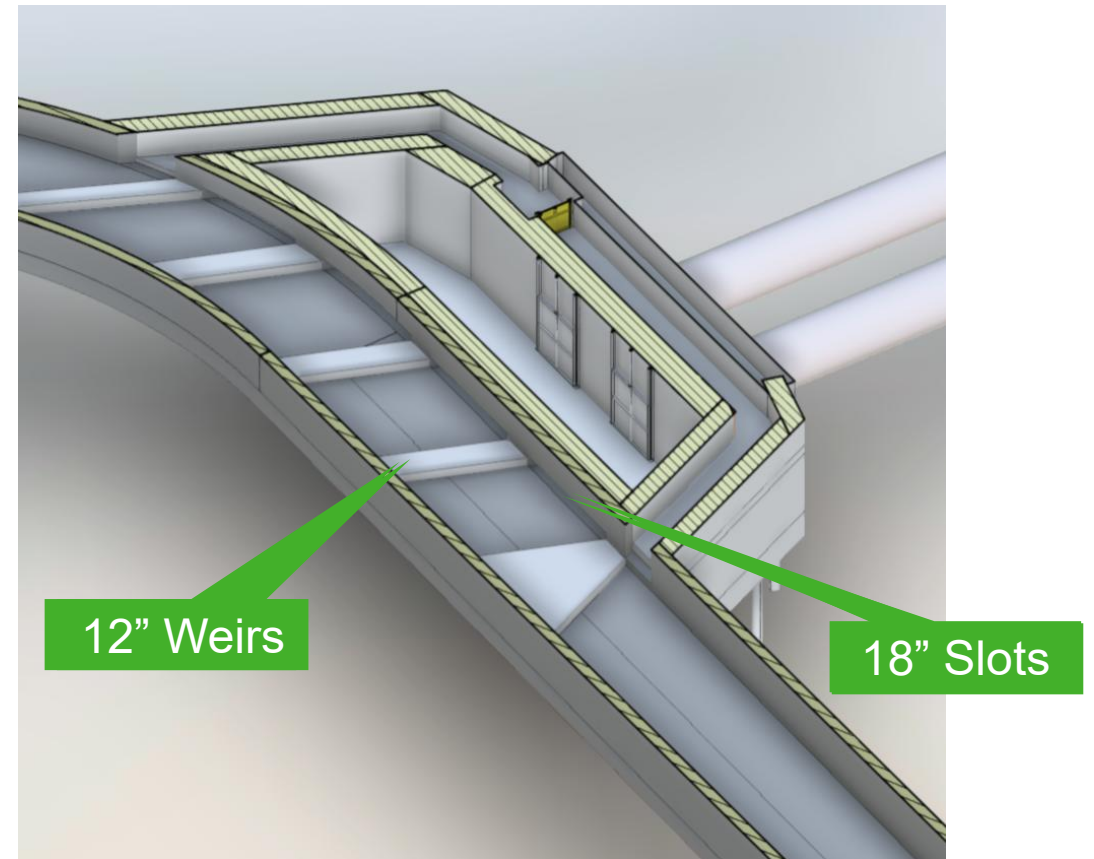
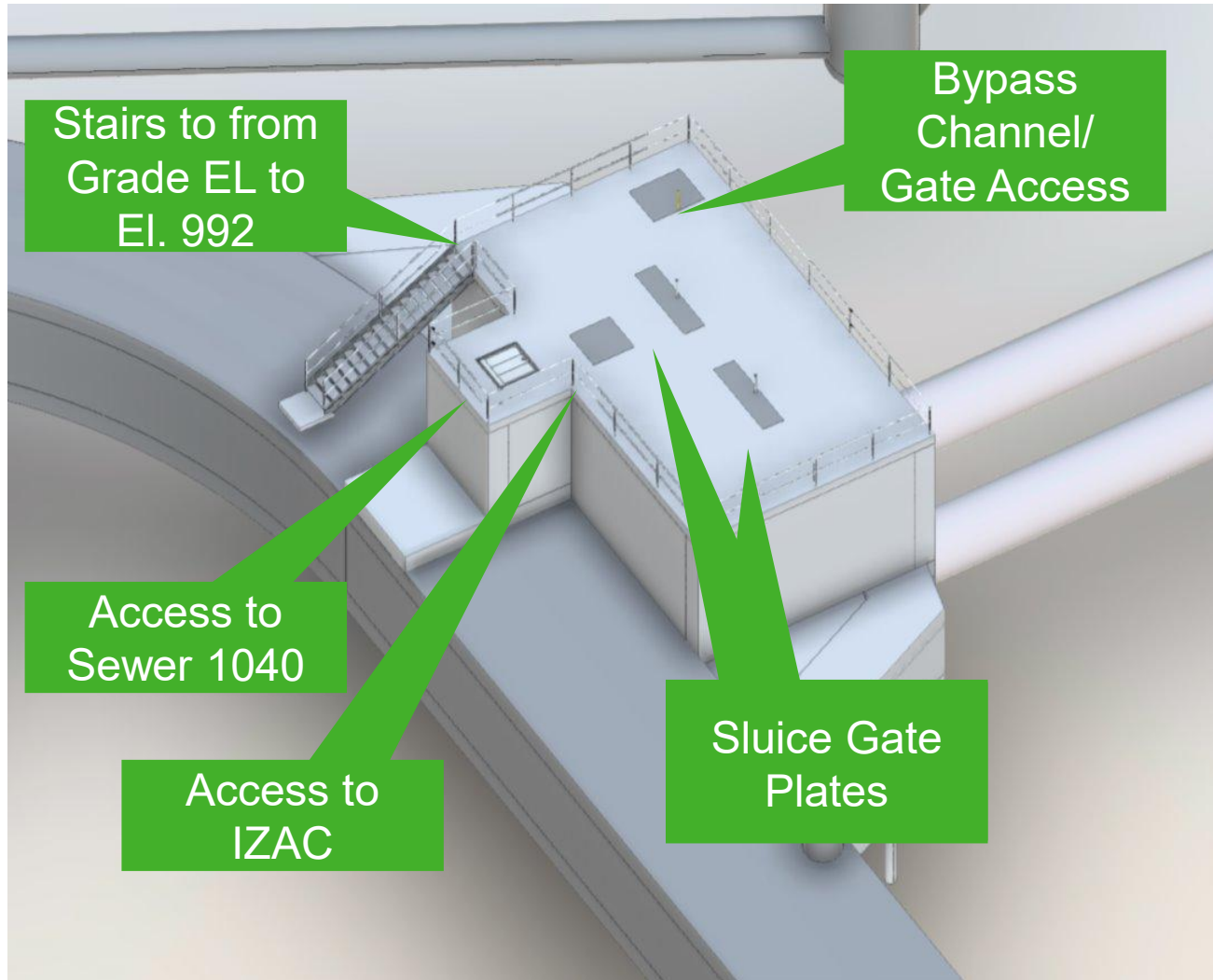


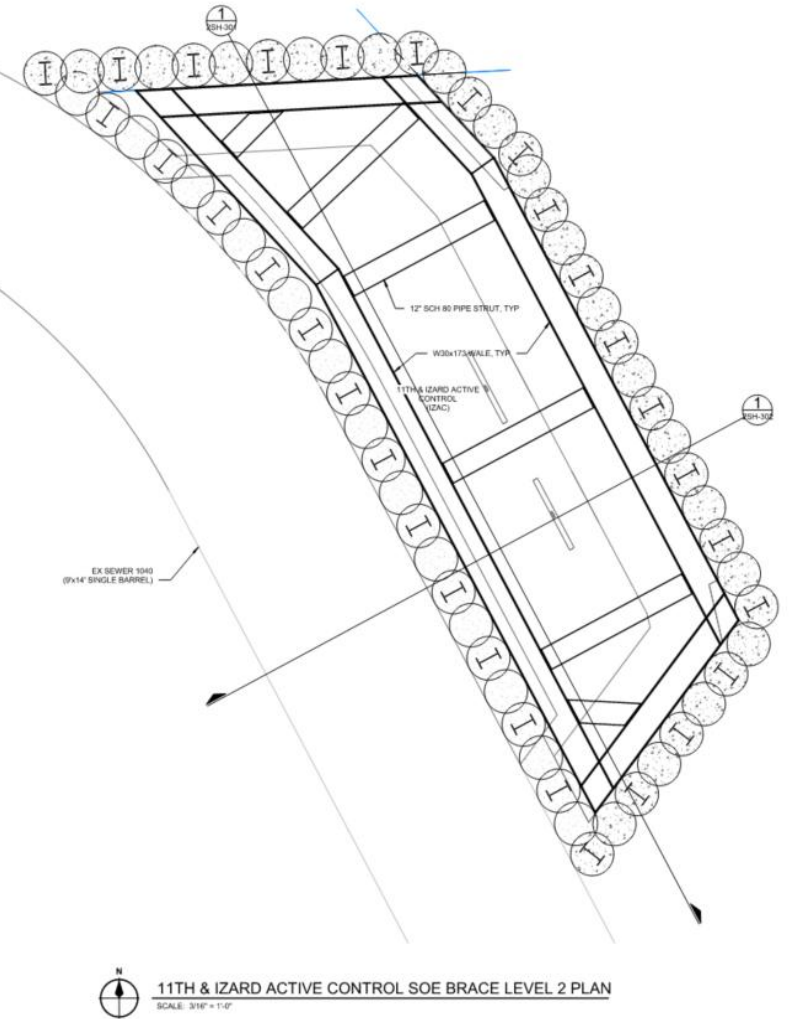
11th and Izard Projects

- Package 1
 - NDCS
 - GNI Drop Shaft (SOE)
 - NDCS Drop Shaft (SOE)
- Package 2
 - IZAC
 - Diversion Sewers
 - IZ GSF
 - NDCS Drop Shaft - finish

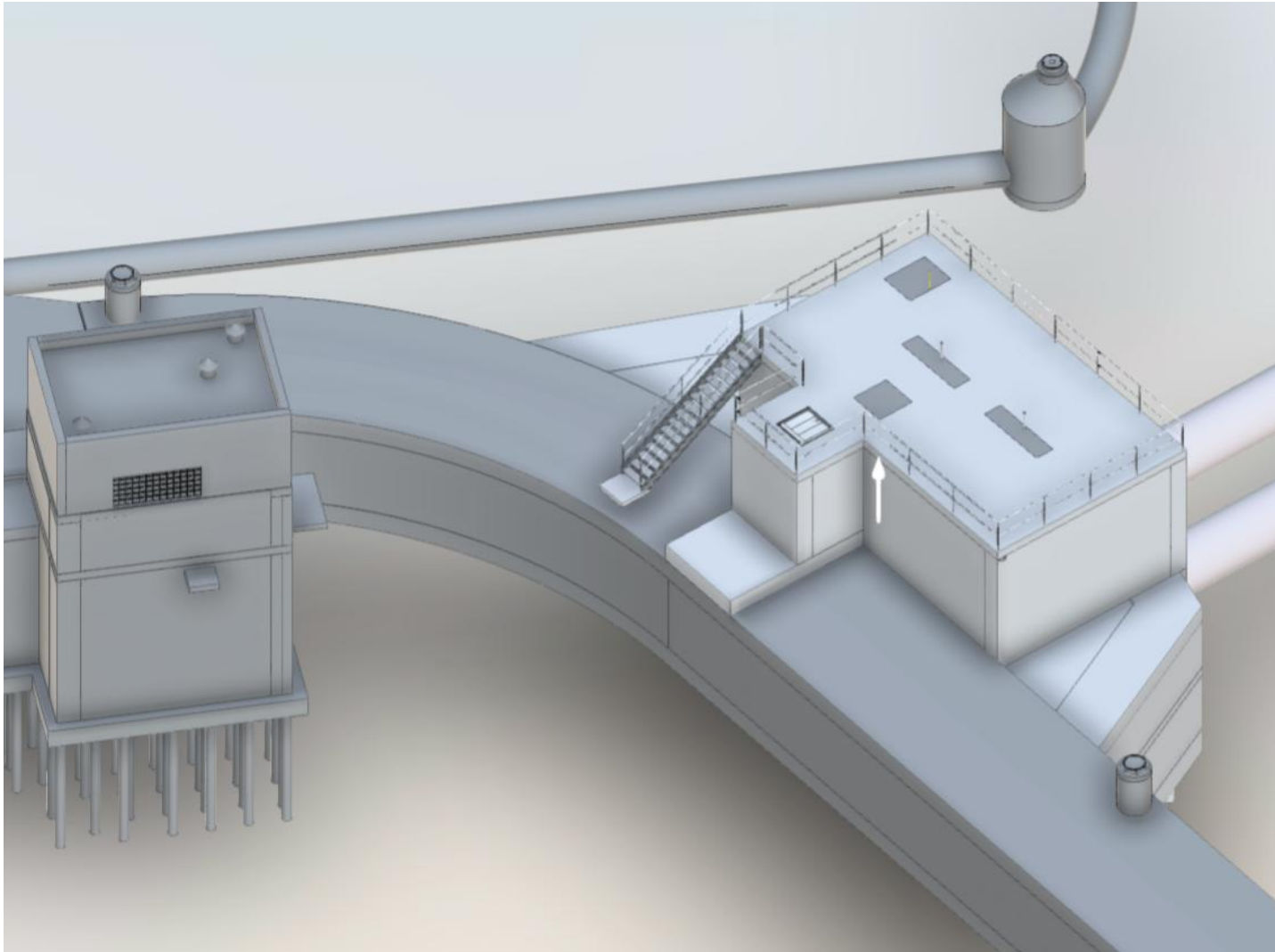


IZAC Updates





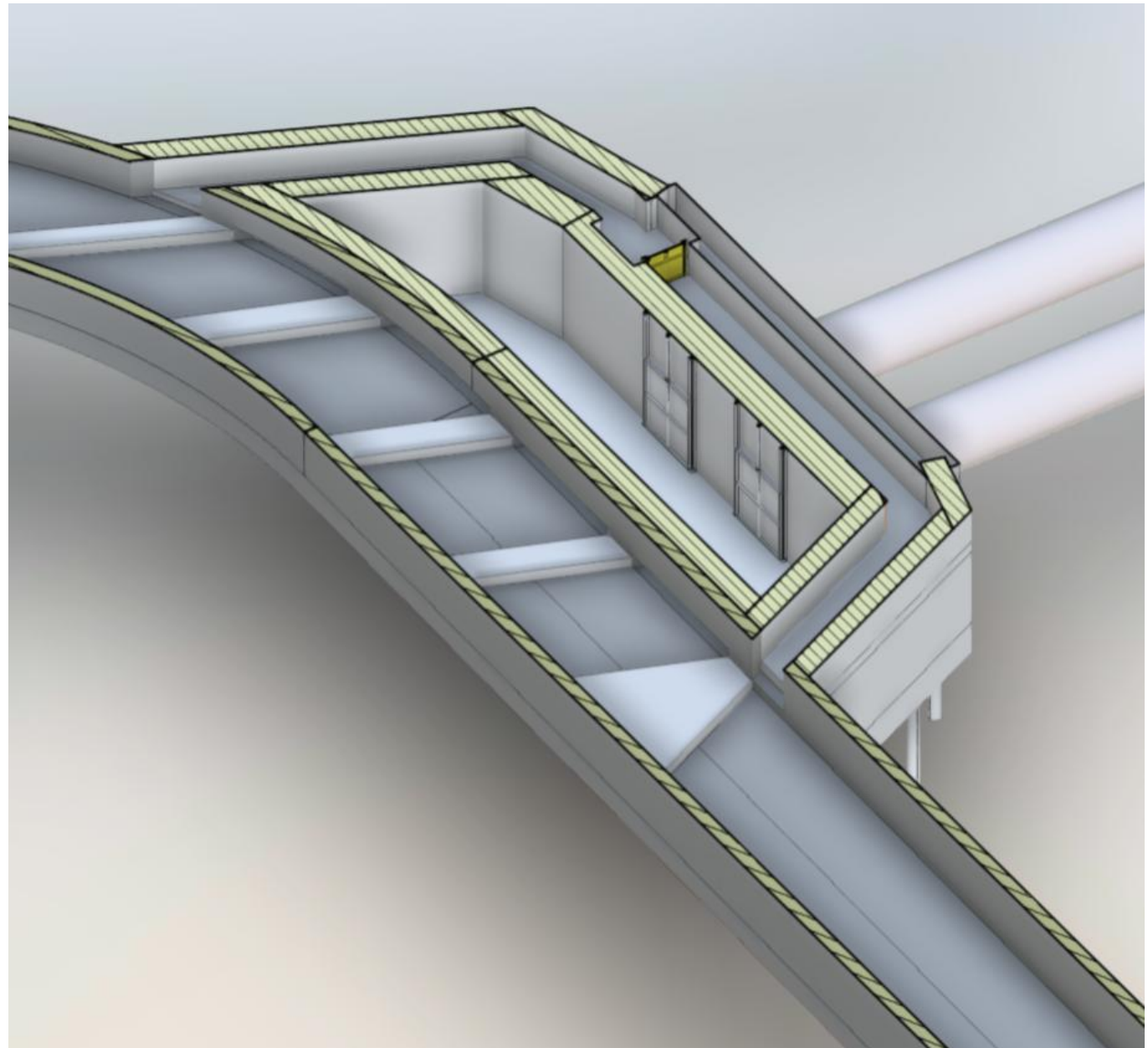
IZAC Updates



- Roof Plan
 - Open to match similar
 - Removeable planks
- Hatches
 - Type, size and location
 - Orientation of openings
 - Safety inserts/fall protection
 - Working area
- Stairway
 - Type
 - Location
- Personnel Access
 - Confined space entry/Tripod
 - No ladders
- Panel Locations
- Level sensor access

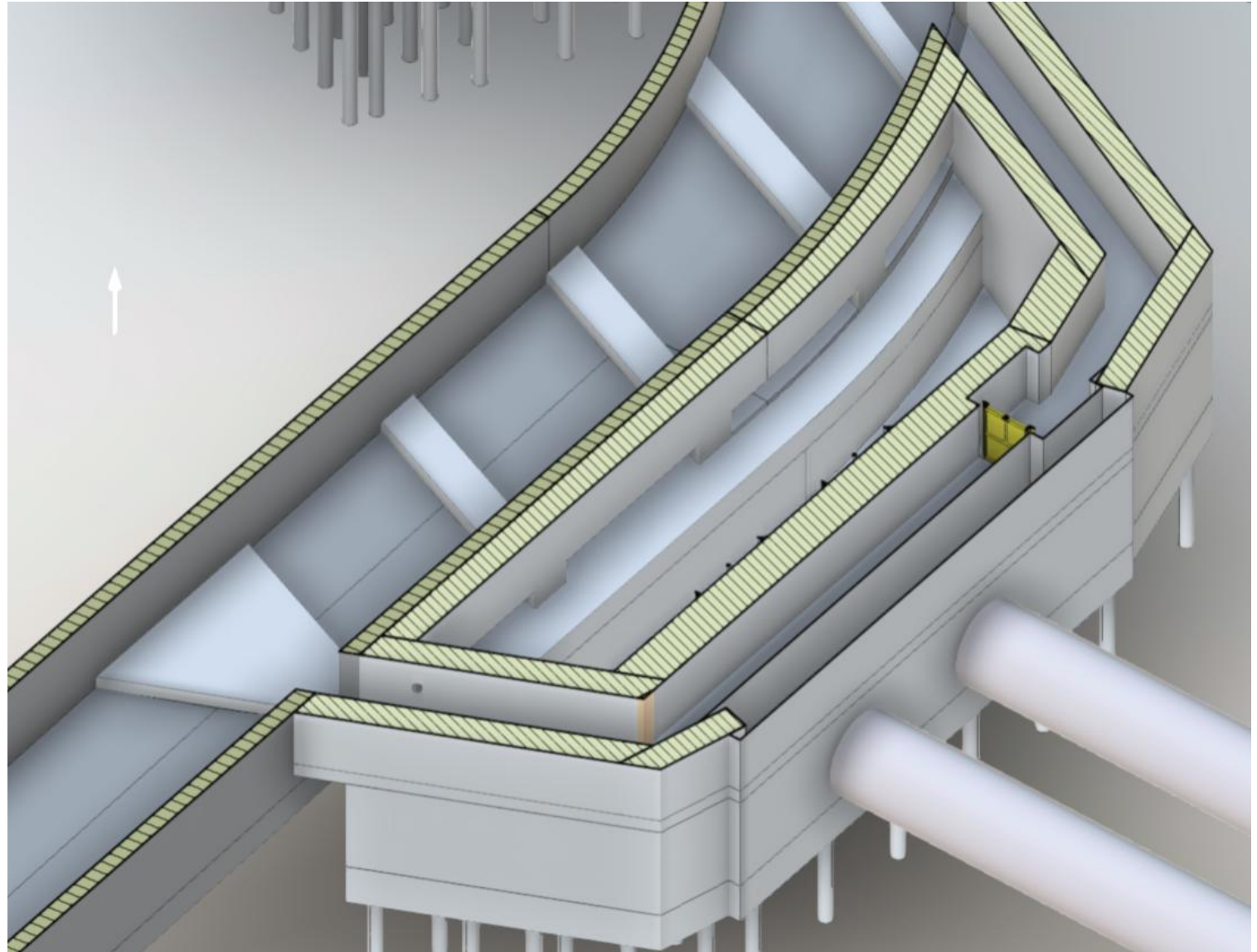
IZAC Updates

- 1040 Sewer Mods
 - Influent Weir
 - Diverter Vanes
 - Backflow Shelf
- DWF Diversion bypass
 - Channel
 - Gate
 - Operations
- Diversion structure
 - Gates
 - Operations

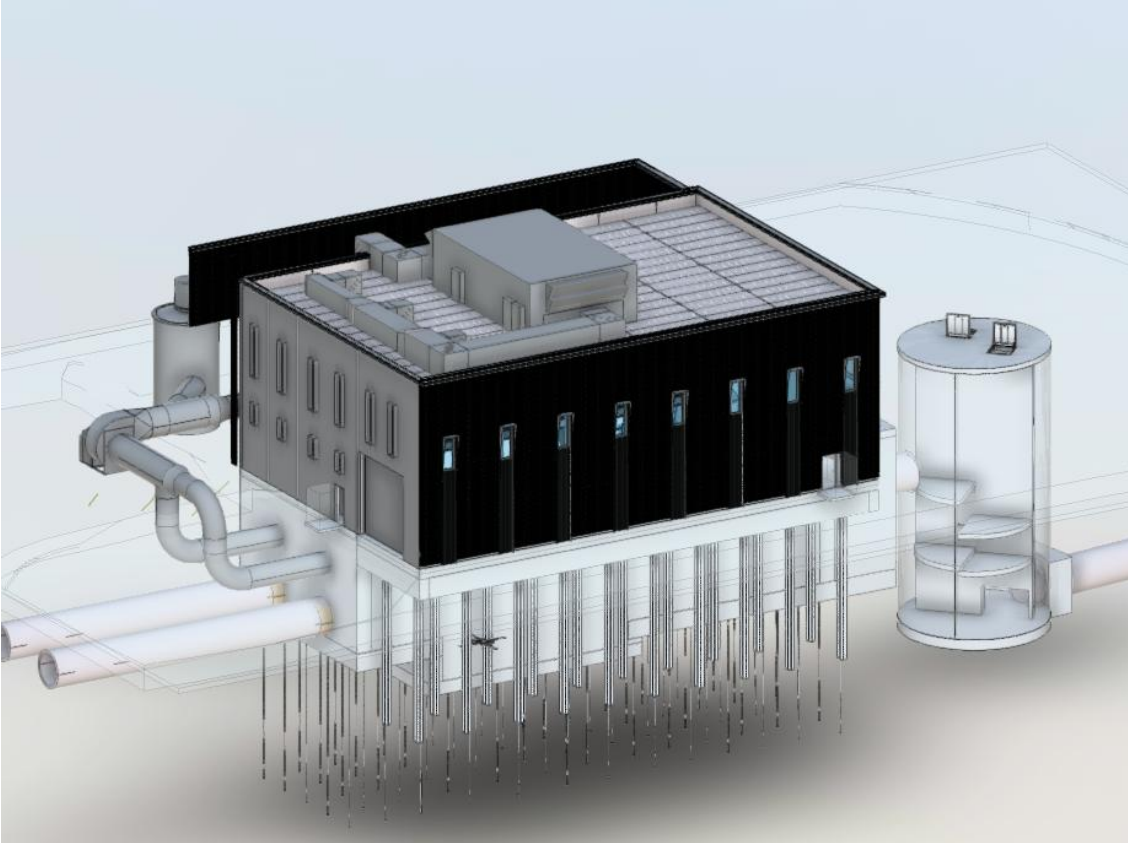


IZAC Updates

- Diversion slot dimensions
- Fillet layout to prevent grit accumulation
- Operation under normal and high river level conditions

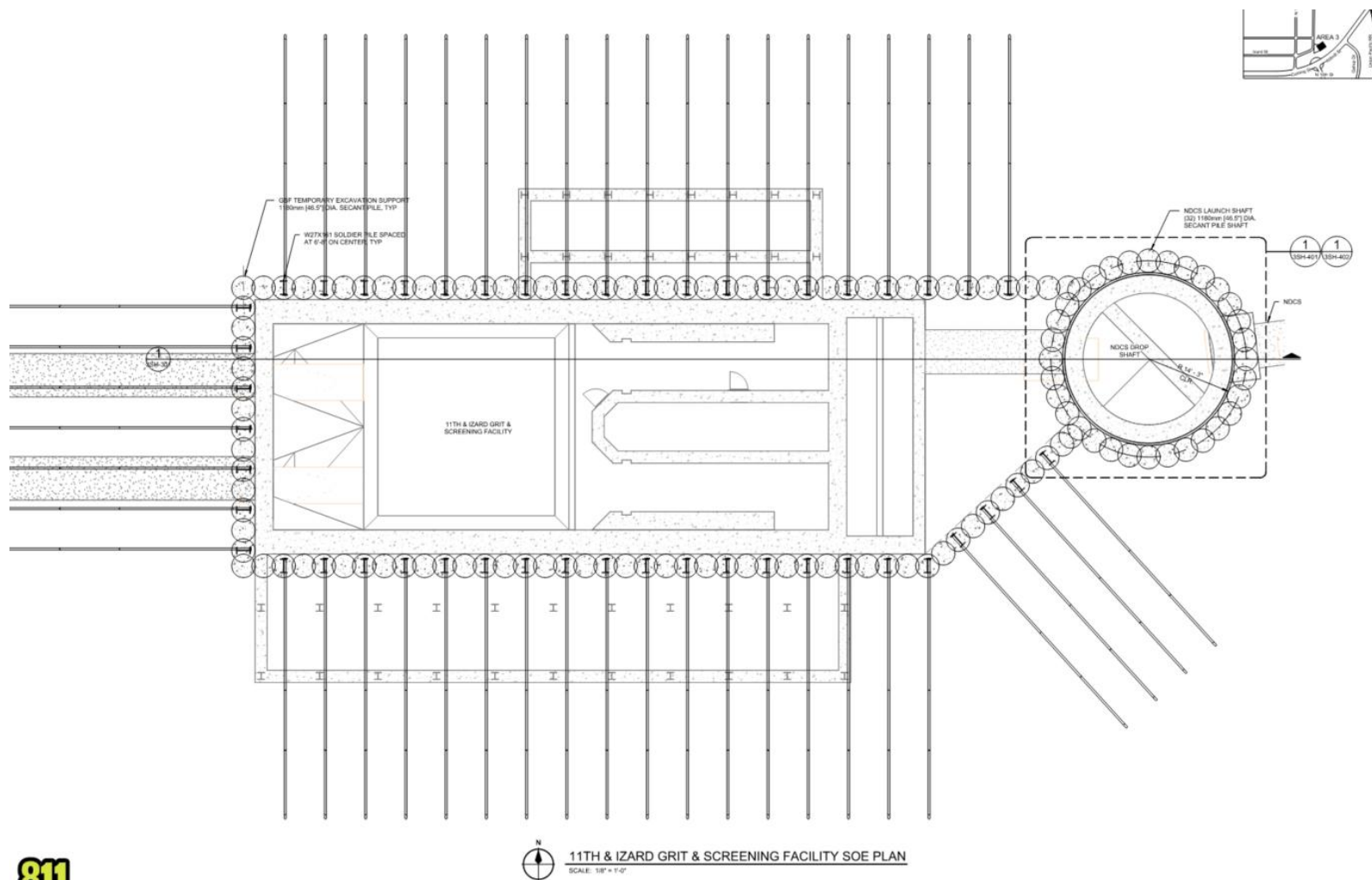


IZ GSF Updates

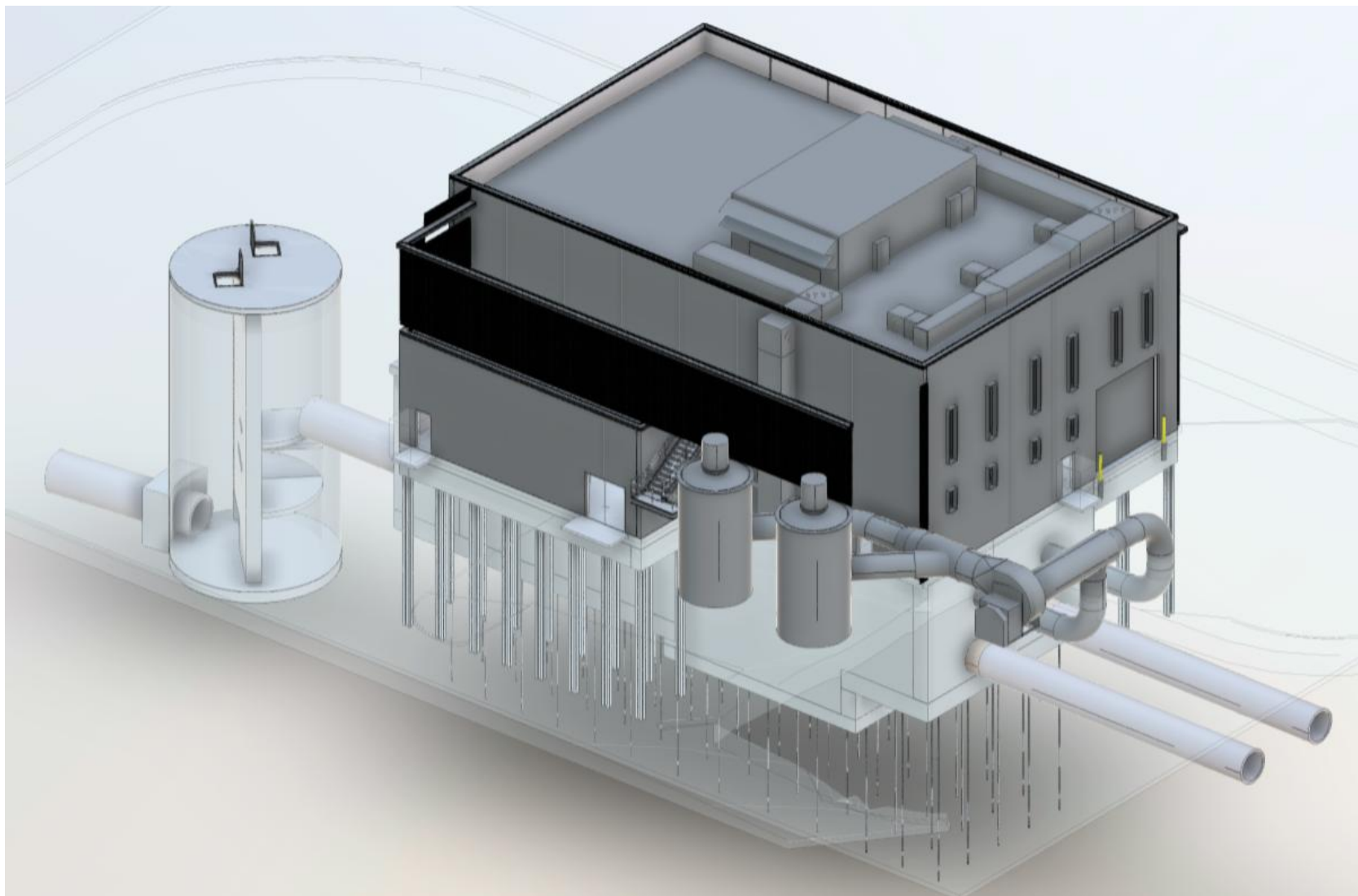


- Luger Truck Access
- Odor duct orientation
- Access for sewer cleaning by Contractors
- Equipment installation delayed
 - Odor control units
 - Screens
 - Generator
 - Other?

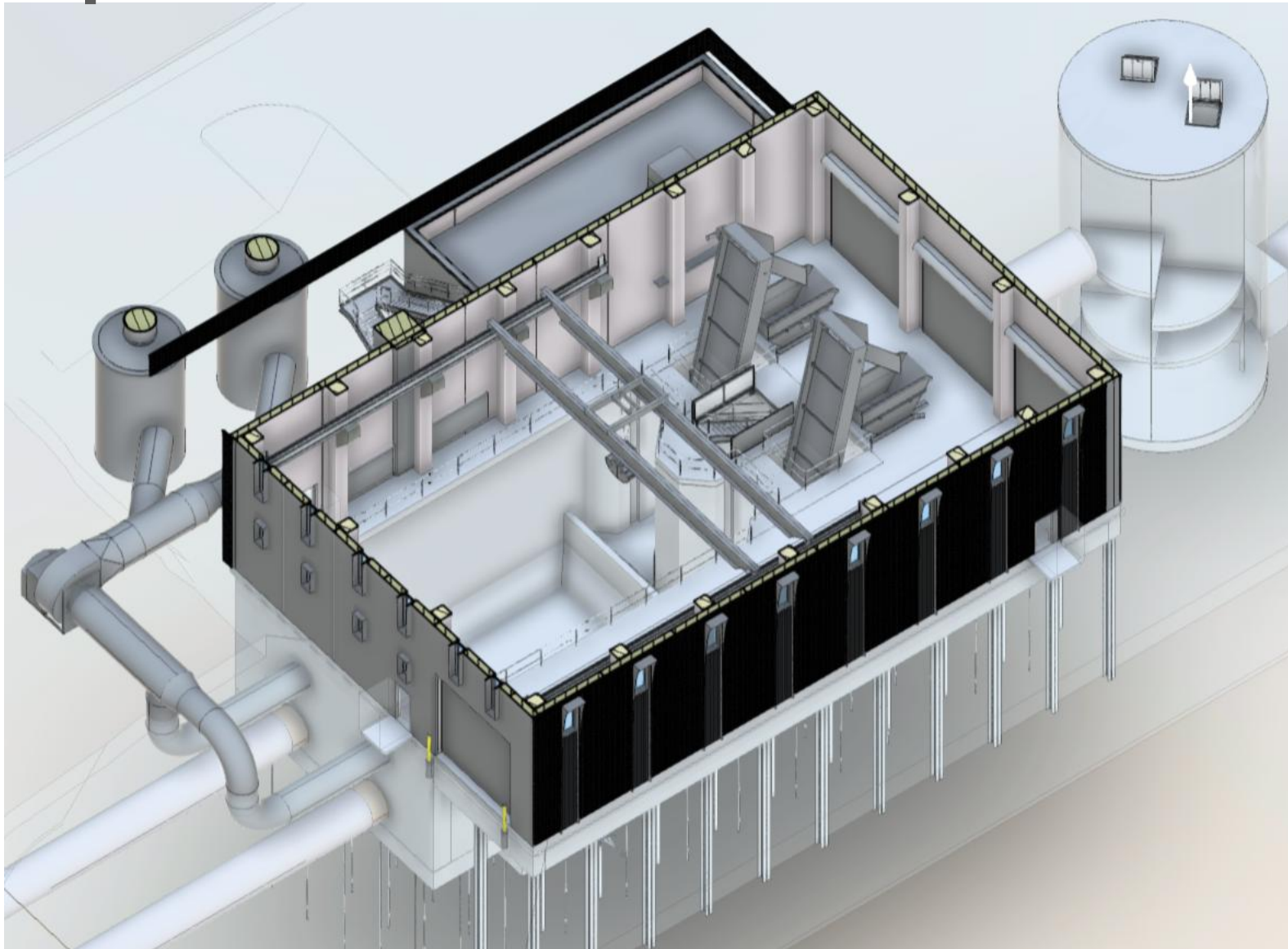
IZ GSF – SOE



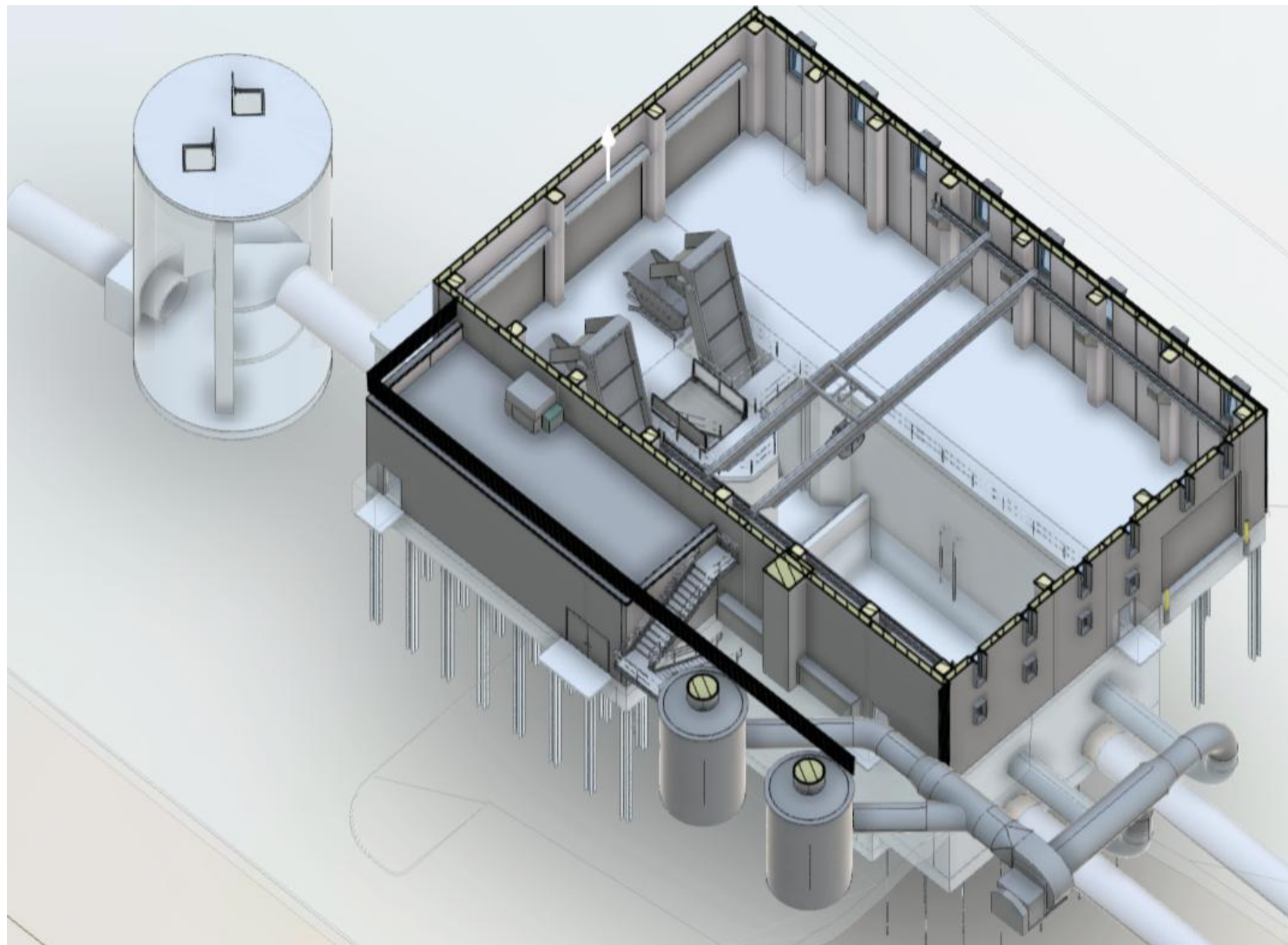
IZ GSF Updates



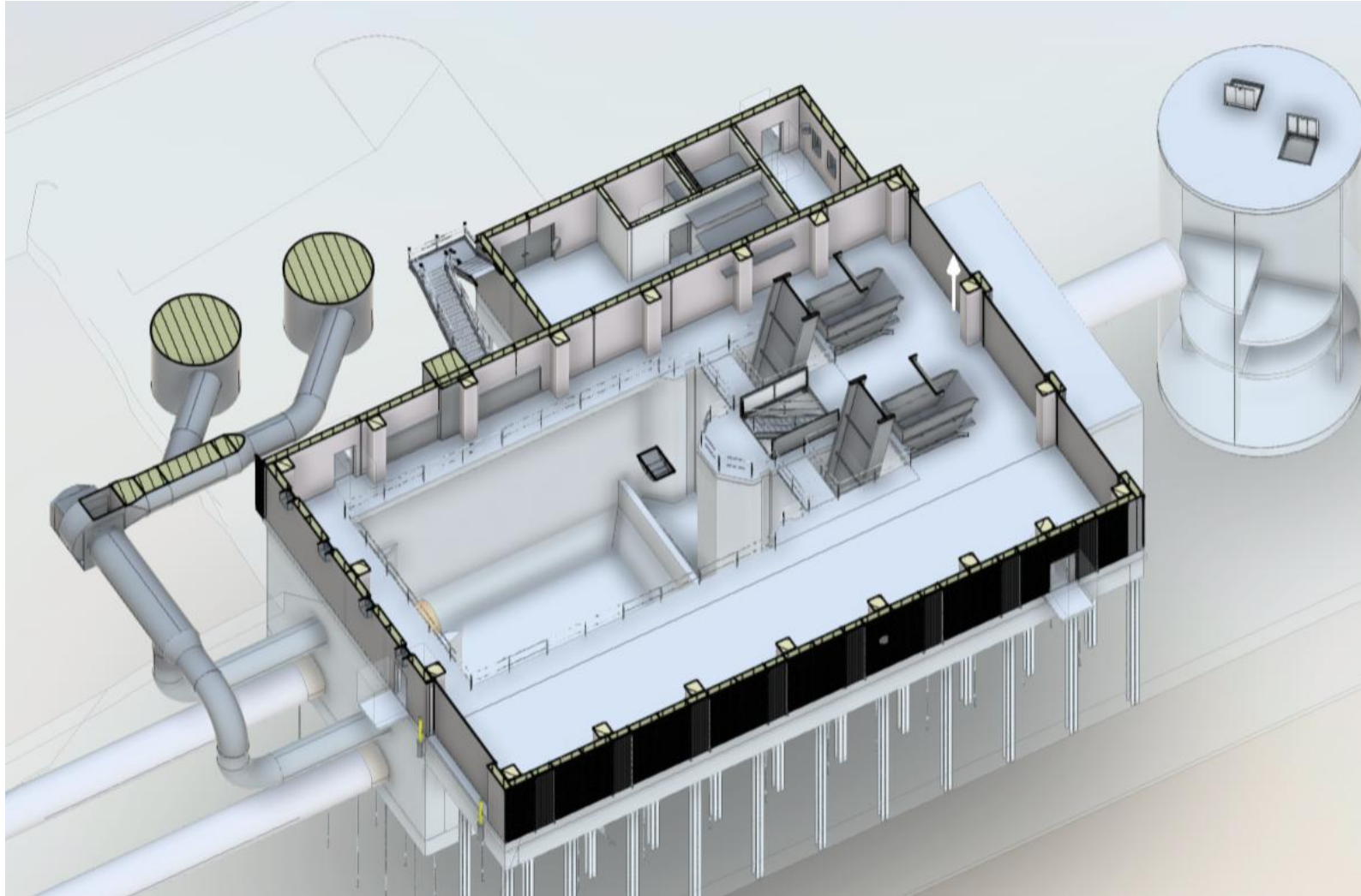
IZ GSF Updates



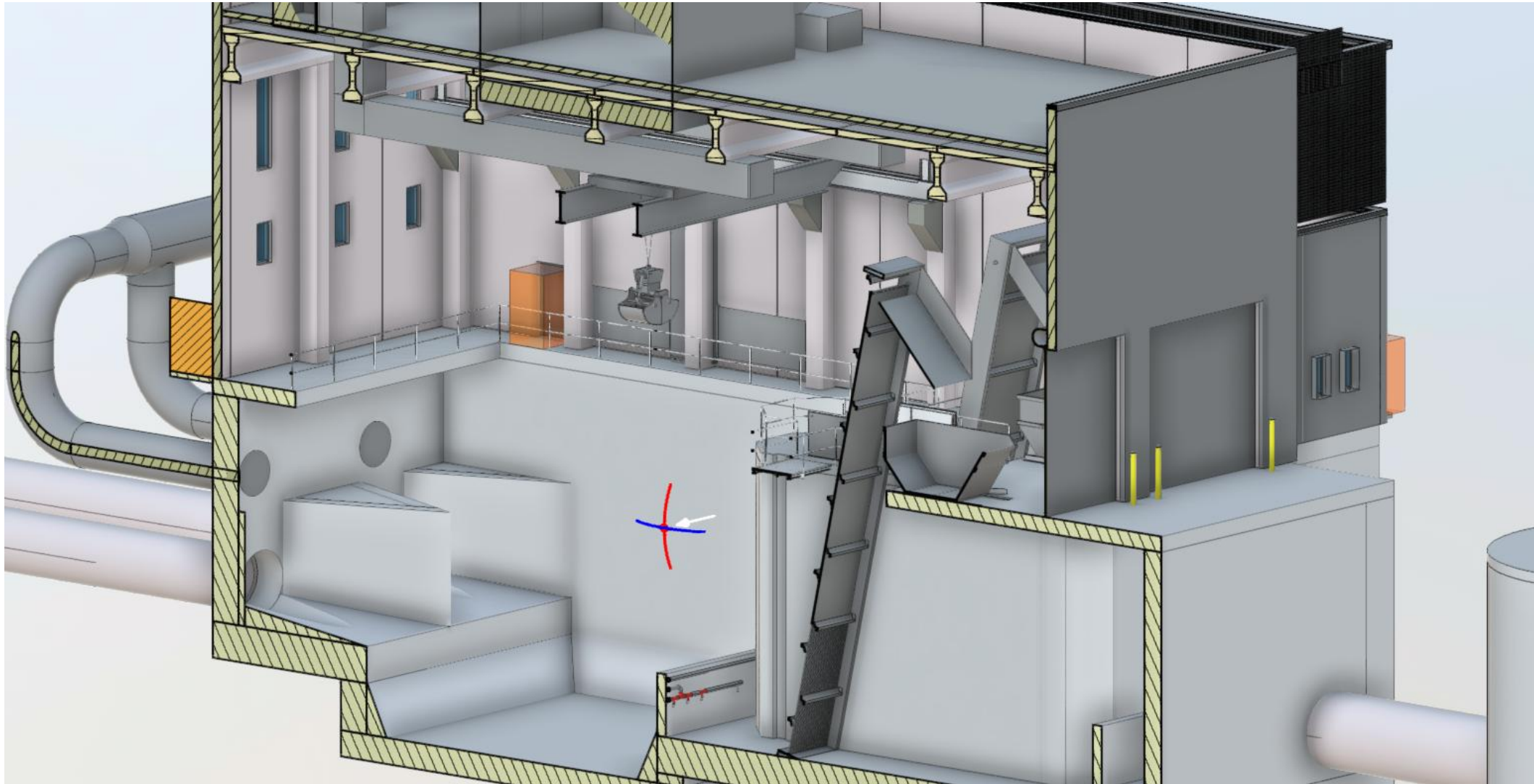
IZ GSF Updates



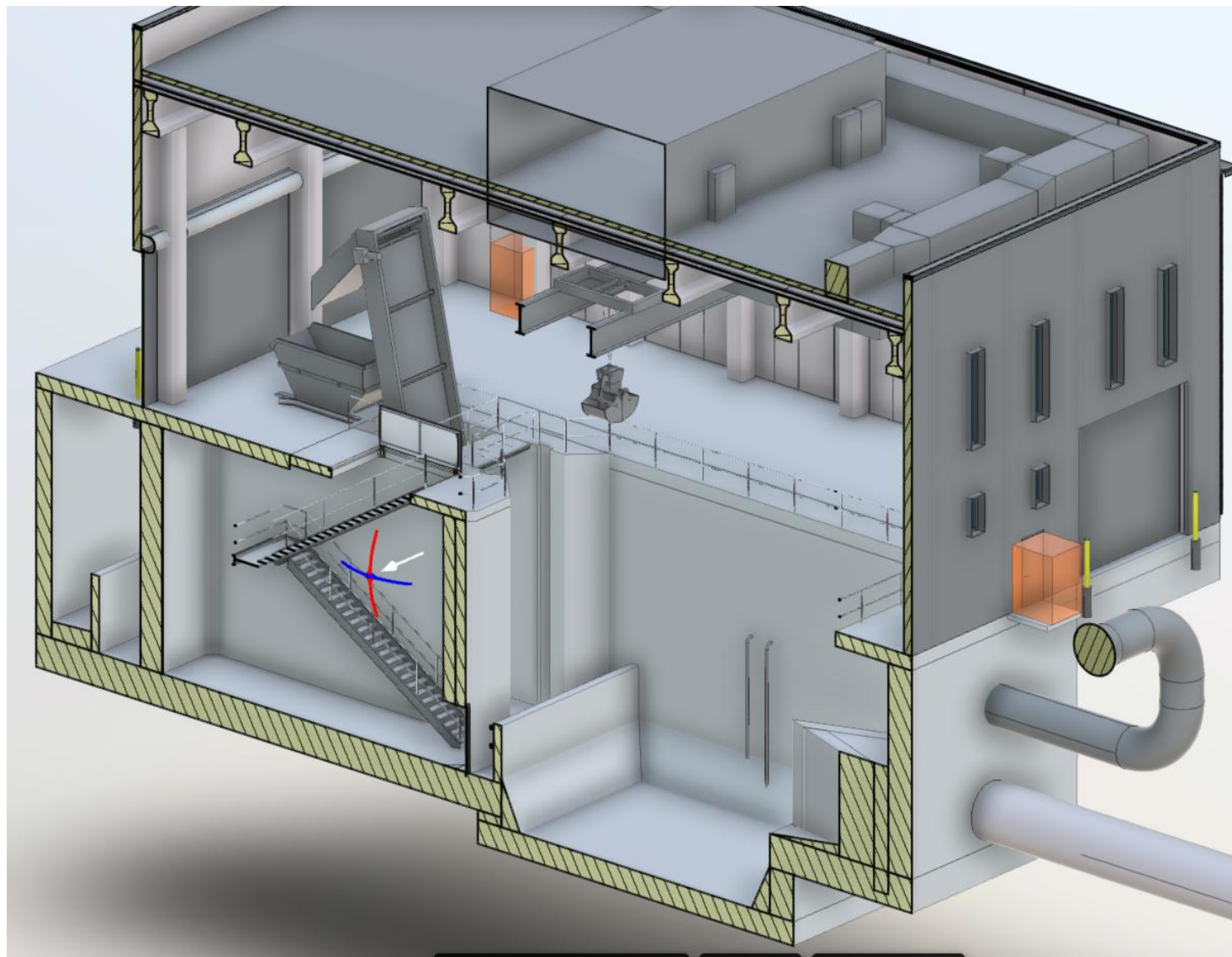
IZ GSF Updates



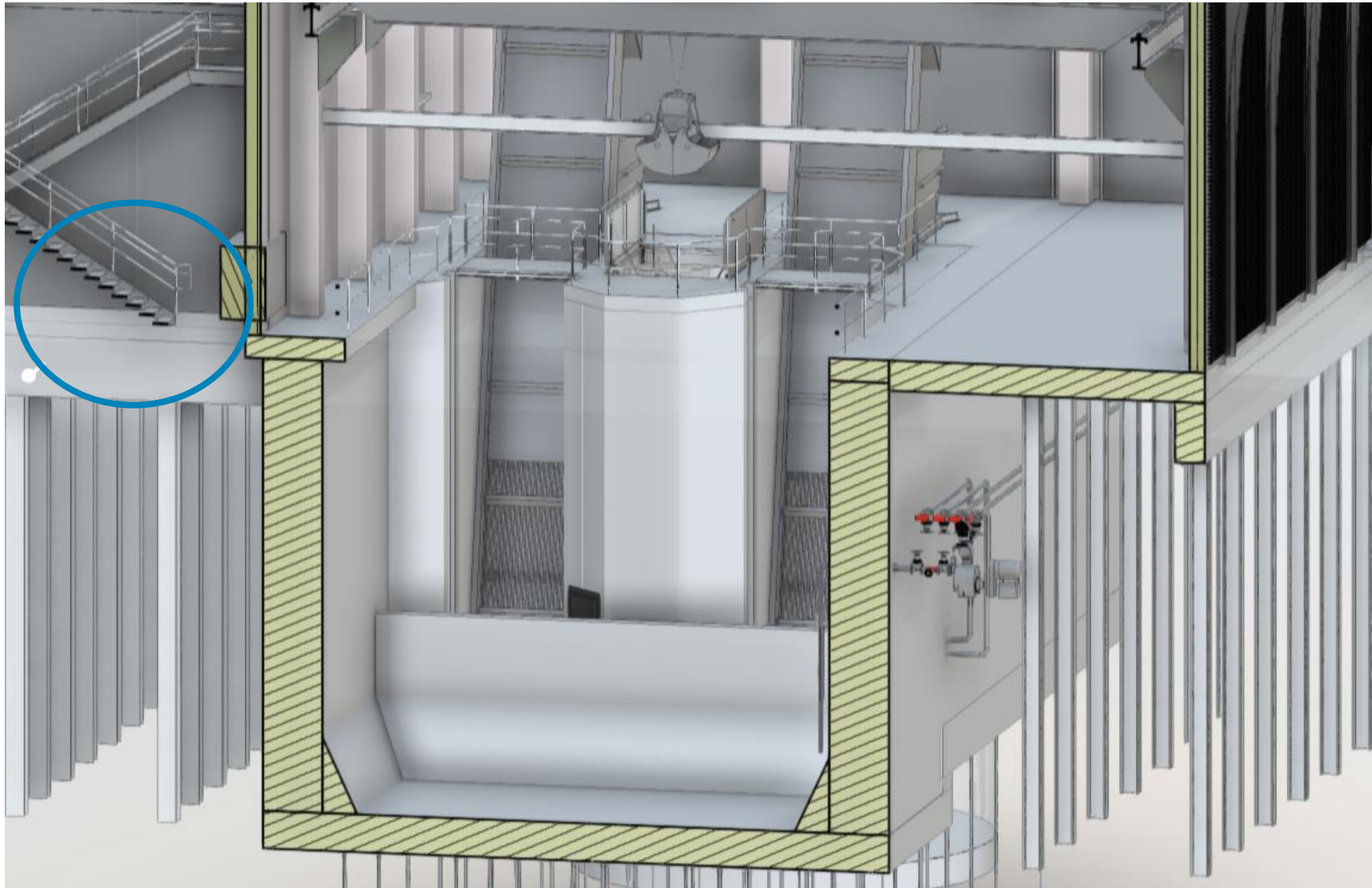
IZ GSF Updates



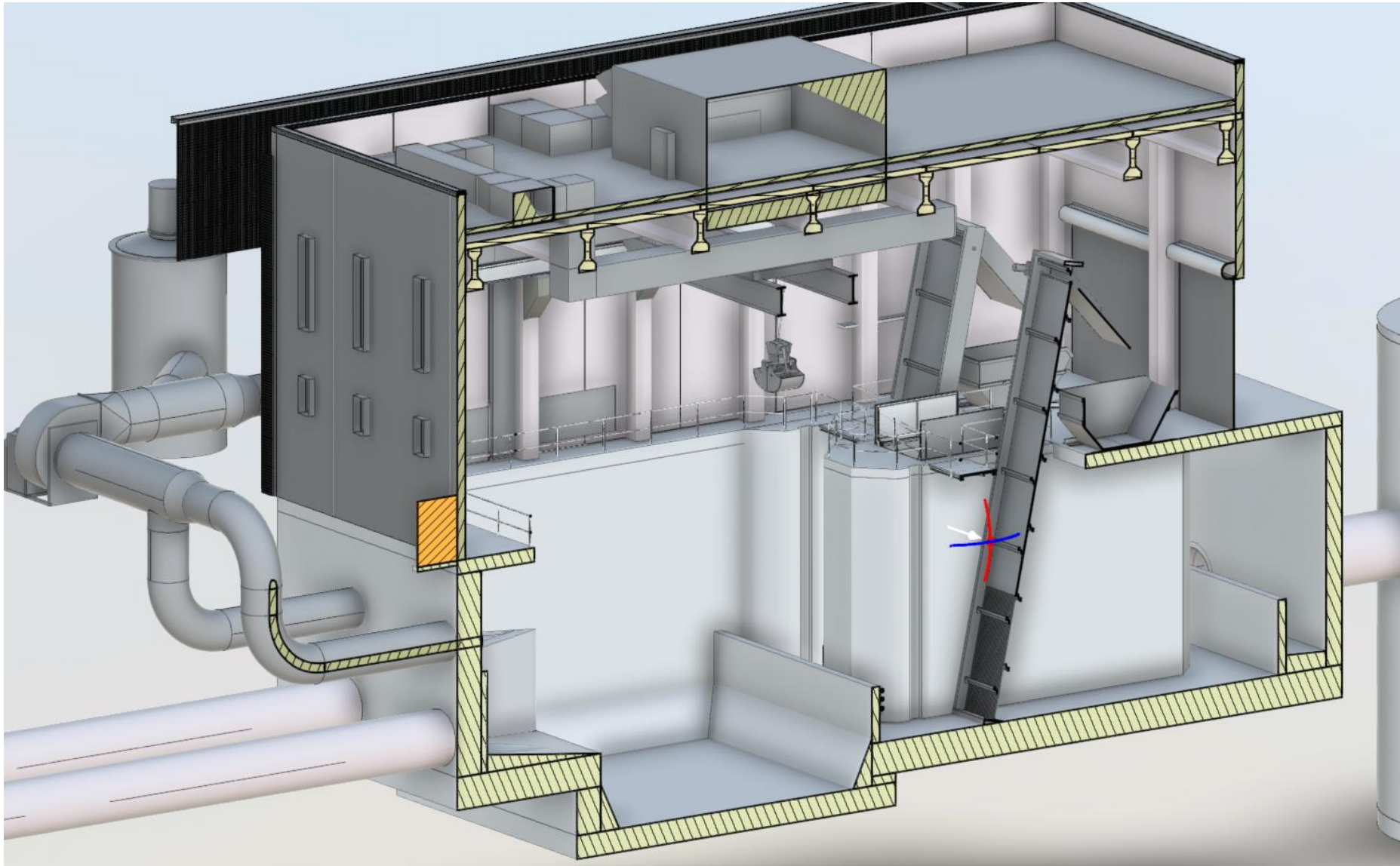
IZ GSF Updates



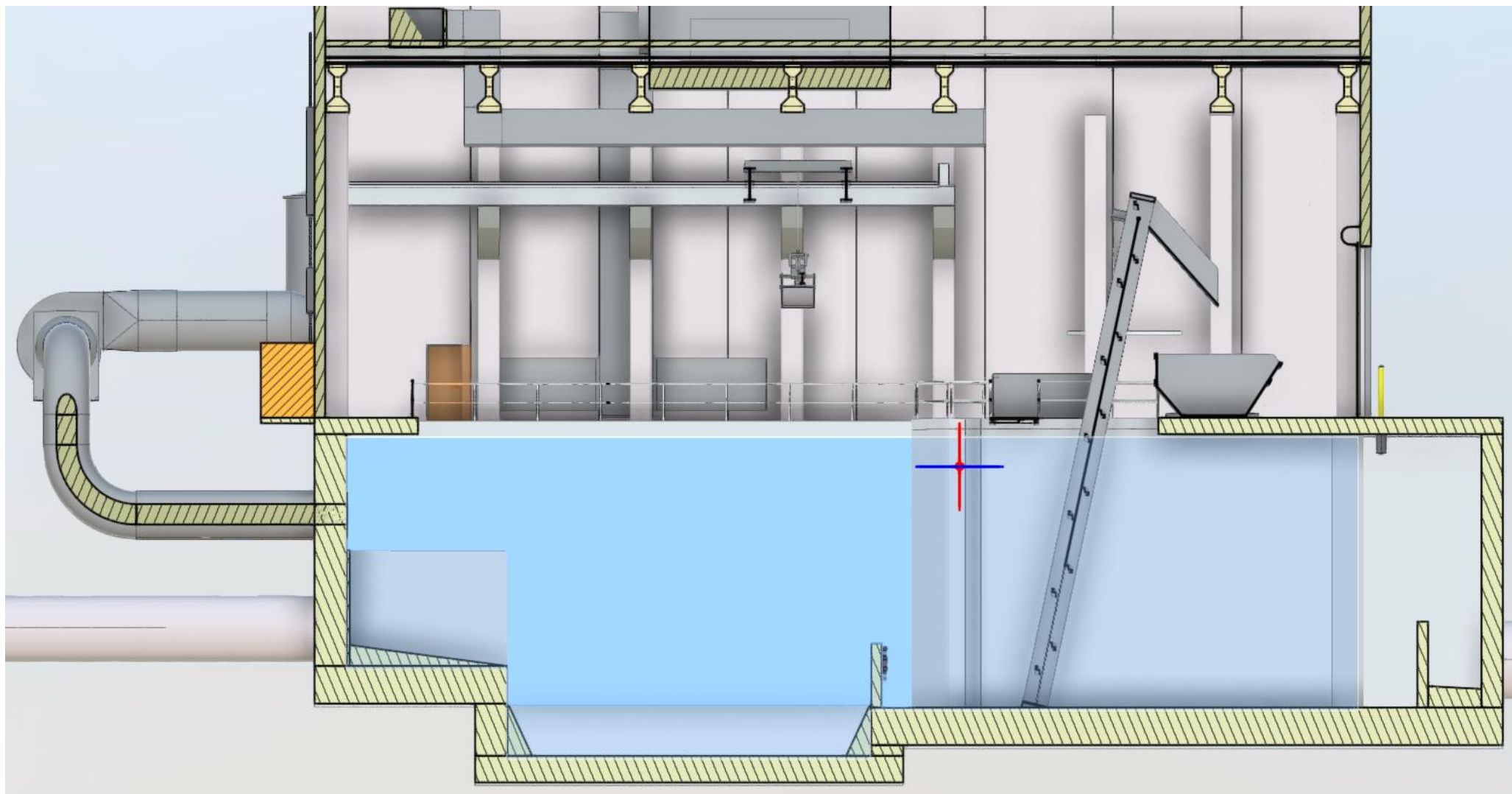
IZ GSF Updates – Cantilever Walkway



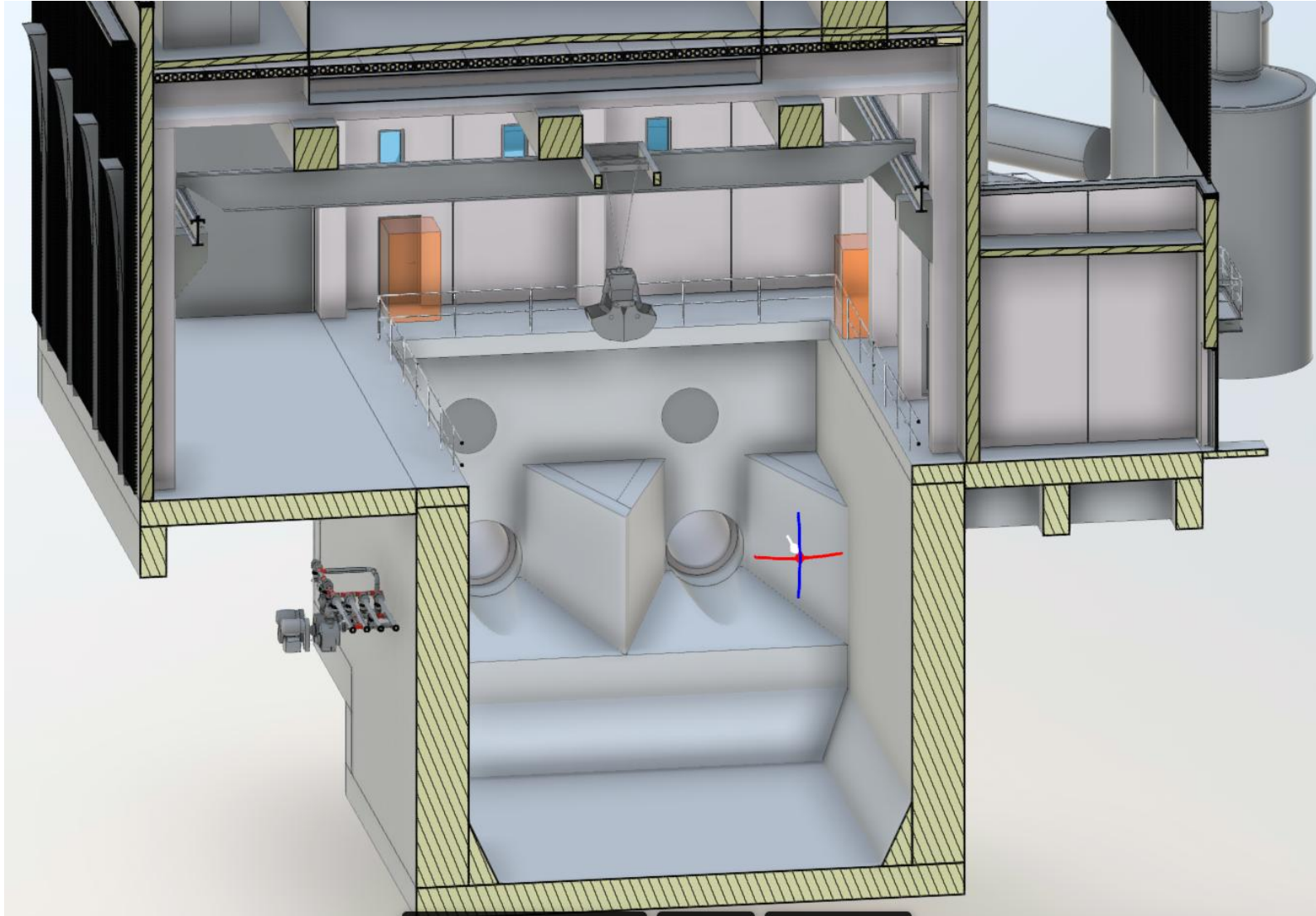
IZ GSF Updates



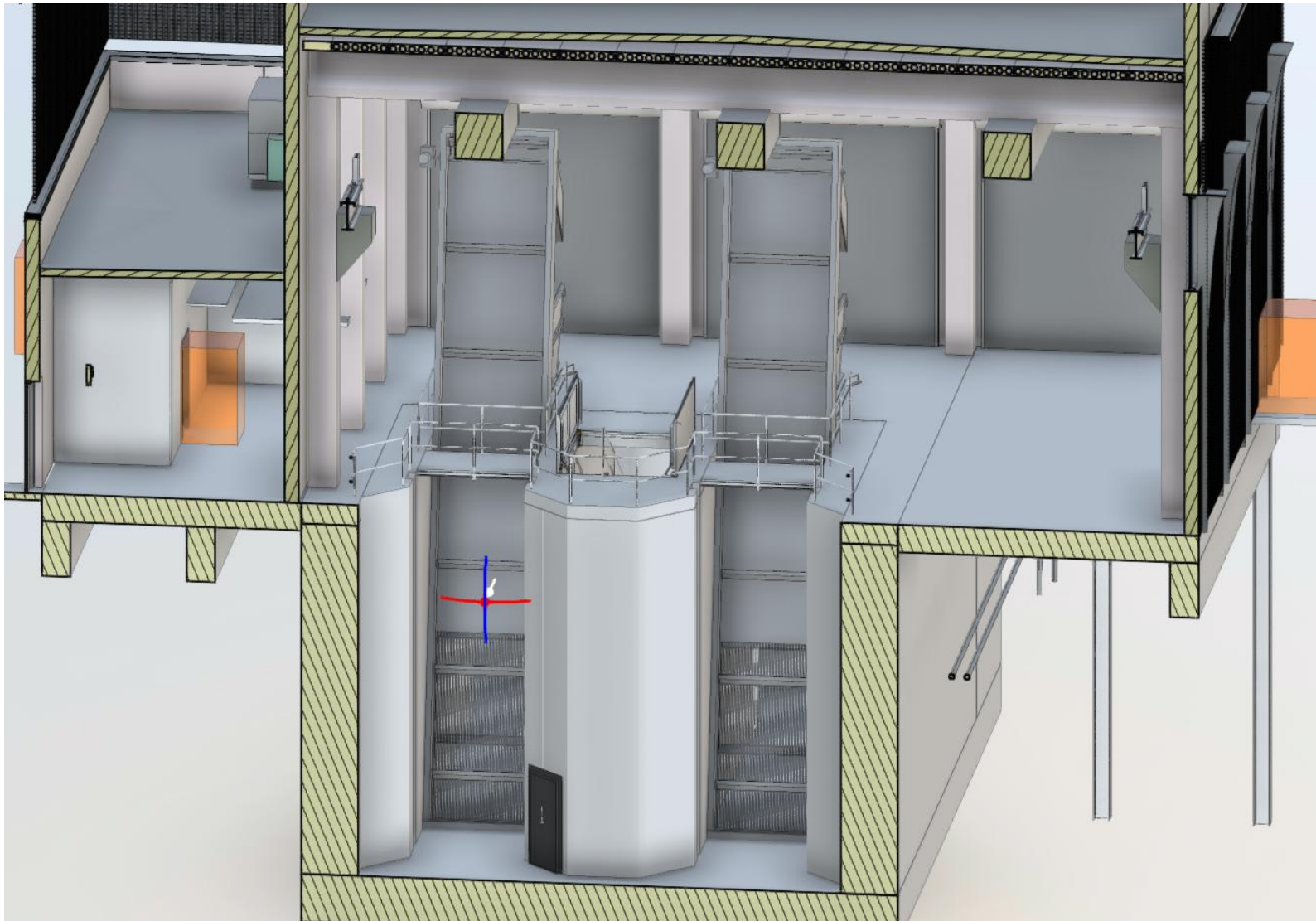
IZ GSF Updates



IZ GSF Updates



IZ GSF Updates



Major Risks

1. Contaminated soils
2. Site constraints / site access
 - Contractor coordination at IZ GSF drop shaft location
3. Schedule Coordination with other Projects
 - 11th Street Connector Project
 - Development projects in this corridor
 - Union Omaha Soccer
 - Others

Health and Safety Considerations

Contaminated Soils

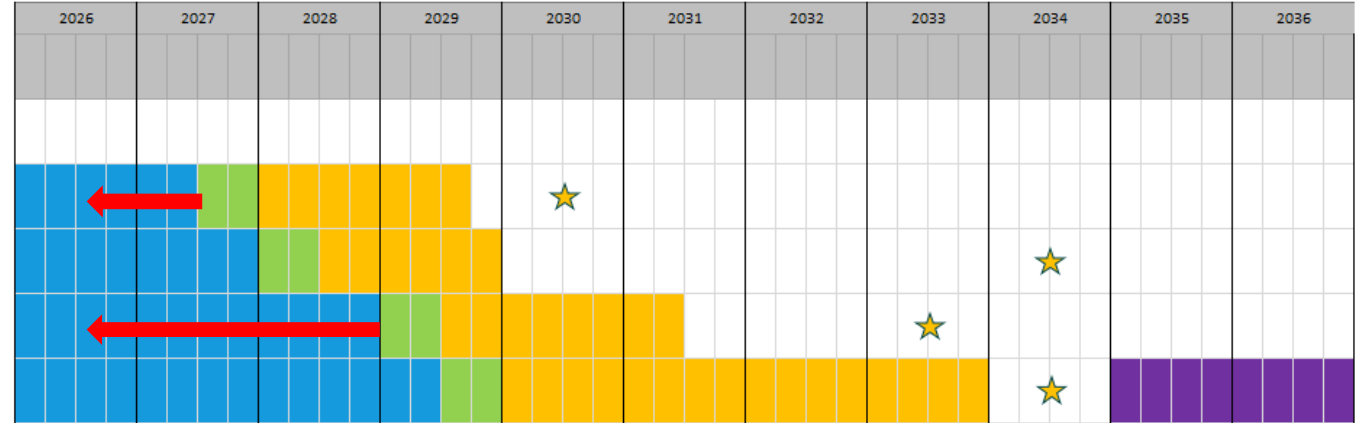
- 40- Hour OSHA HAZWOPER until contaminants are isolated
 - PFAS (Former Fire Training Facility-Gallup; Firefighting-UPRR)
 - Metals (Foundry Sand, C&D Waste, Incinerator Ash)
 - Semi-Volatiles (Foundry Sand, C&D Waste, Incinerator Ash)

Material Management and Disposal

- Needs to follow NDWEE (Gallup) or EPA requirements (EPA)
 - Location TBD
- Disposal proposed at WM-Pheasant Point
 - Additional sampling to be conducted to verify
- Groundwater disposal to follow appropriate discharge permit
 - NEG673000-2017 (Contaminated City of Omaha)
 - NEG671000-2017 (General Construction Dewatering Permit)
 - Permits require 180 days for review/approval
 - Additional sampling to be completed to verify permit

Previous Project Schedule

Milestone description	Package
Northeast Omaha HRTB and Associated Projects	
North Downtown Conveyance Sewer (Area 4)	1
Grace St. Ditch Outfall Structure/Grading Package (Area 5)	2
11th and Izard Active Control (Area 2) 11th and Izard Grit and Screening Facility (Area 3)	3
Northeast Omaha HRTB (Area 6) Grace St. and North Interceptor Diversion Rehab (Area 1)	4



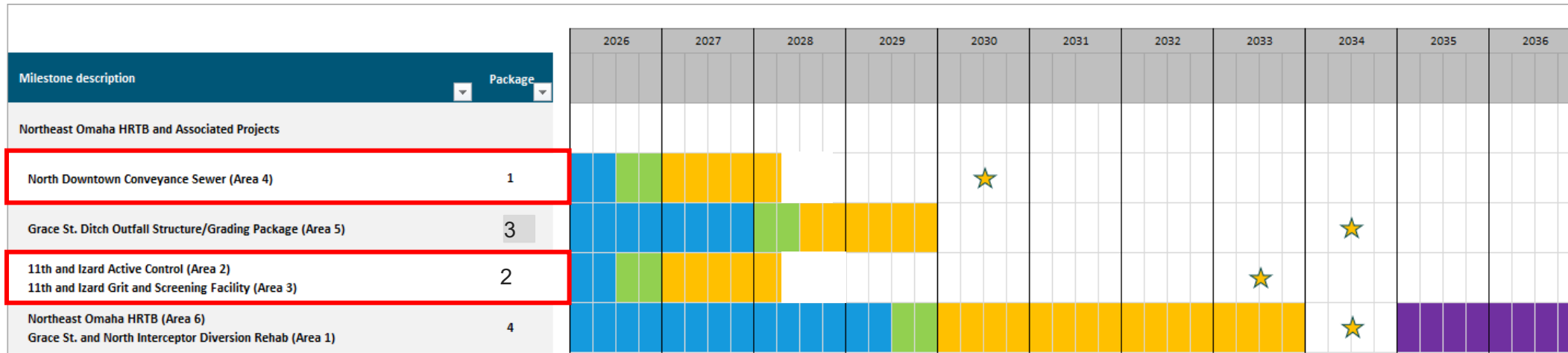
Dates are subject to change as design advances.

Updated 12/2/2025



★ LTCP Update Compliance Date

11th and Izard - Project Schedule



Dates are subject to change as design advances.

The schedule may be amended if the delivery method changes from Design-Bid-Build to Construction Manager at Risk.

Updated 12/2/2025



★ LTCP Update Compliance Date

Design Approach (IZAC & IZ GSF, NDCS)

- Design: Now until 6/15/26
 - 30% Submittal Date: 2/2/26
 - 60% Submittal Date: 3/30/26 (Send to Corps for Tech Review & UPRR for Crossing Review)
 - 90% Submittal Date: 6/15/26
 - Permit Submittal Date: 6/15/26
 - Building Department (pre-review), NDWEE
- Bidding: 7/15/26 to 8/26/26
- NOA: expedited
- IFC/Conformed Set : 10/1/26
- Contractor NTP: 11/19/26

Contractor Constructability

- Items/issues of concern that come to mind.
- Any questions/comments about project.
- Any ideas for potential changes/improvements



Thank you

- We appreciate your time
- We will stay in contact as this project progresses
 - Approximately April/May, 60% Design point
- If you have any questions or need additional information, please contact us at any time