

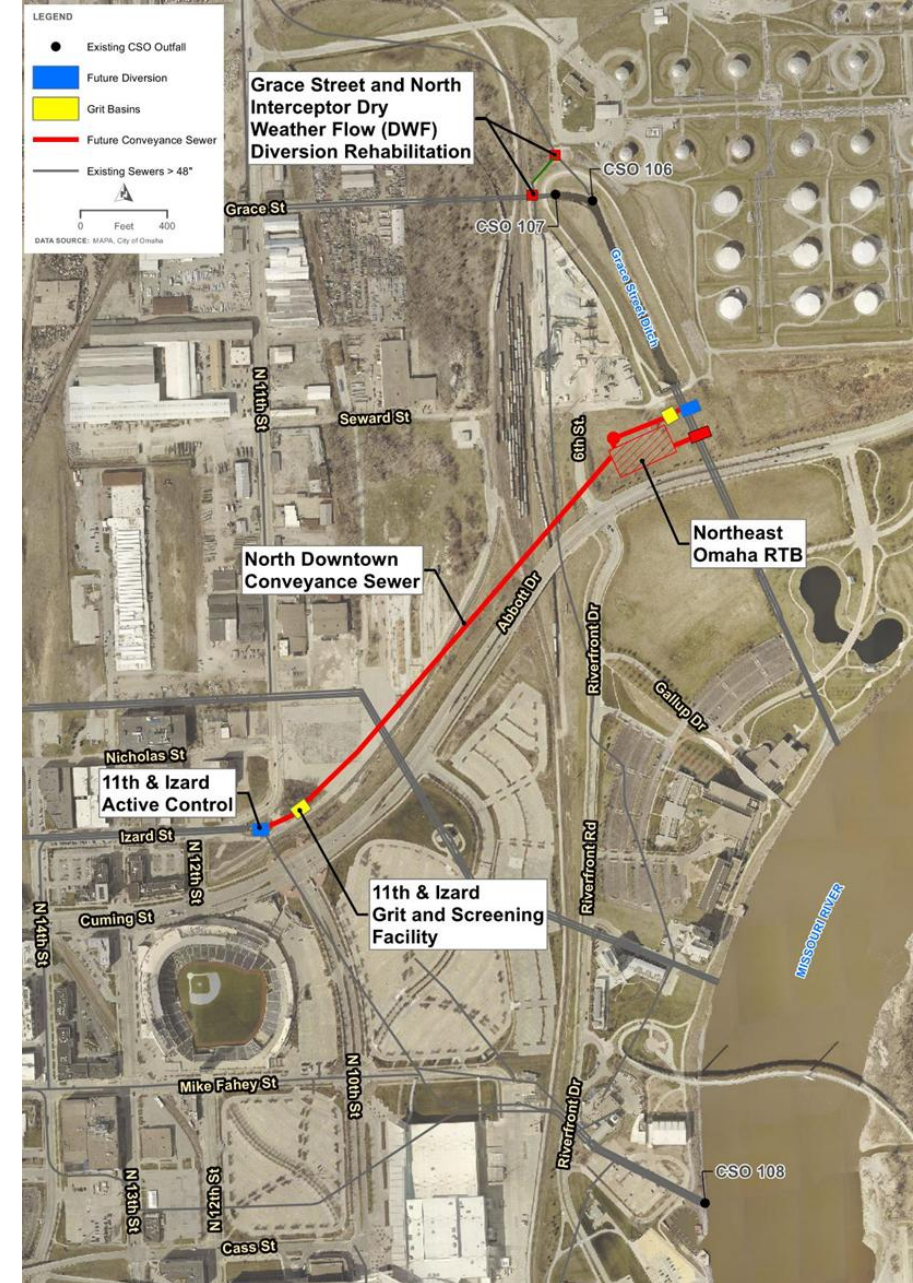
AGENDA

- Contractor Outreach - Project Overview -
 - Introductions
 - Project Overview
 - 4 Construction Packages
 - 2 Construction Packages – 11th and Izard corridor
 - Schedules
 - 11th and Izard – Project Schedules
 - Site Conditions & Constraints
 - Site Review – Adjacent Facilities
 - Project Conceptual Designs
 - Major Risks
 - Project Schedules and Phasing
 - Contractor – constructability thoughts/suggestions

Project Overview

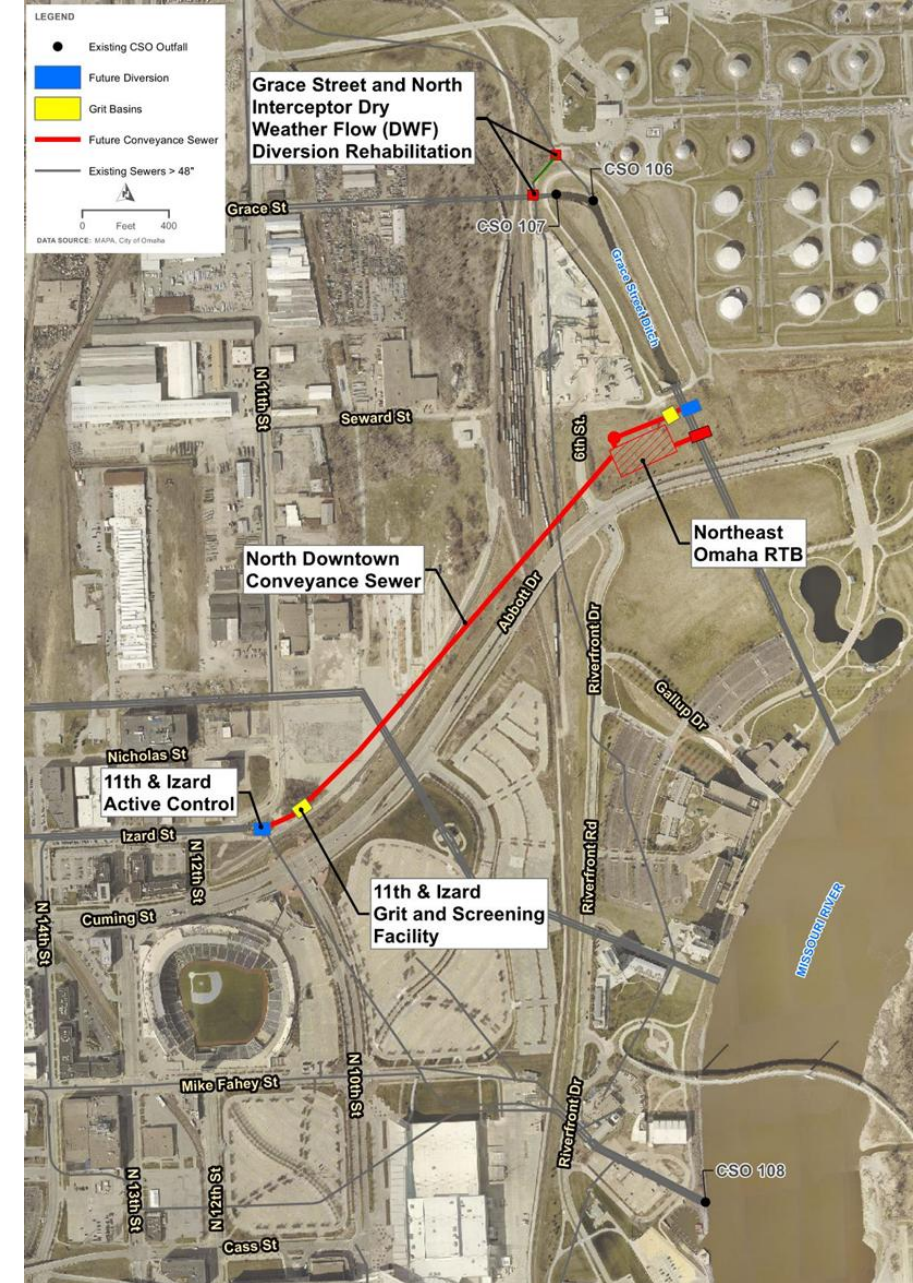
Project Overview

- The City of Omaha, in accordance with their Long Term CSO Control Plan Update, are developing a plan to build the 185 MGD Northeast Omaha (NEO) High-Rate Treatment Basin which will address sewer overflows at CSOs 106, 107 and 108.



Project Elements

- 11th & Iazard Diversion Structure
- 11th & Iazard Grit and Screening Facility
- North Downtown Conveyance Sewer – 11th & Iazard to 6th and Abbott
- Grace Street and North Interceptor Dry Weather Flow (DWF) Diversion Rehabilitation
- Northeast Omaha HRTB at 6th Street & Abbott Drive
 - Grace Street Diversion Structure
 - Grace Street Grit and Screening Facility



NEOHRTB – Site Conditions

- Adjacent property and structures
- Existing Utilities
- USACE Levee/Flooding
- Access for construction

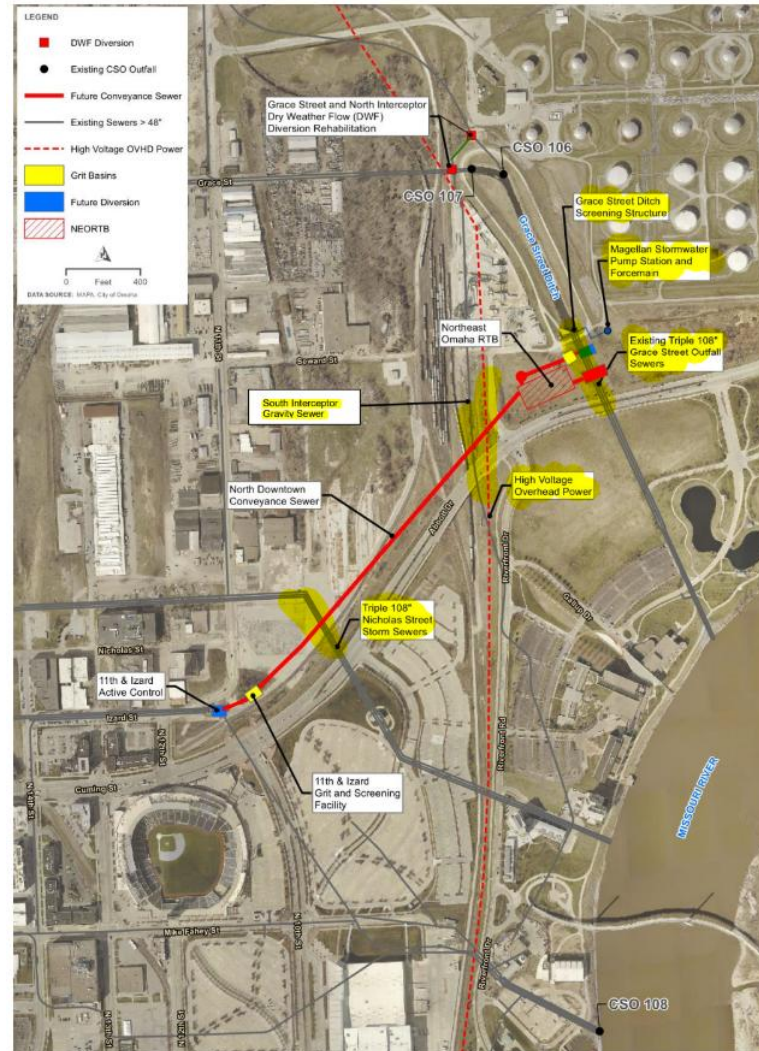


Figure 3-2. Existing Major Utilities within the Northeast Omaha Retention Treatment Basin Project Area

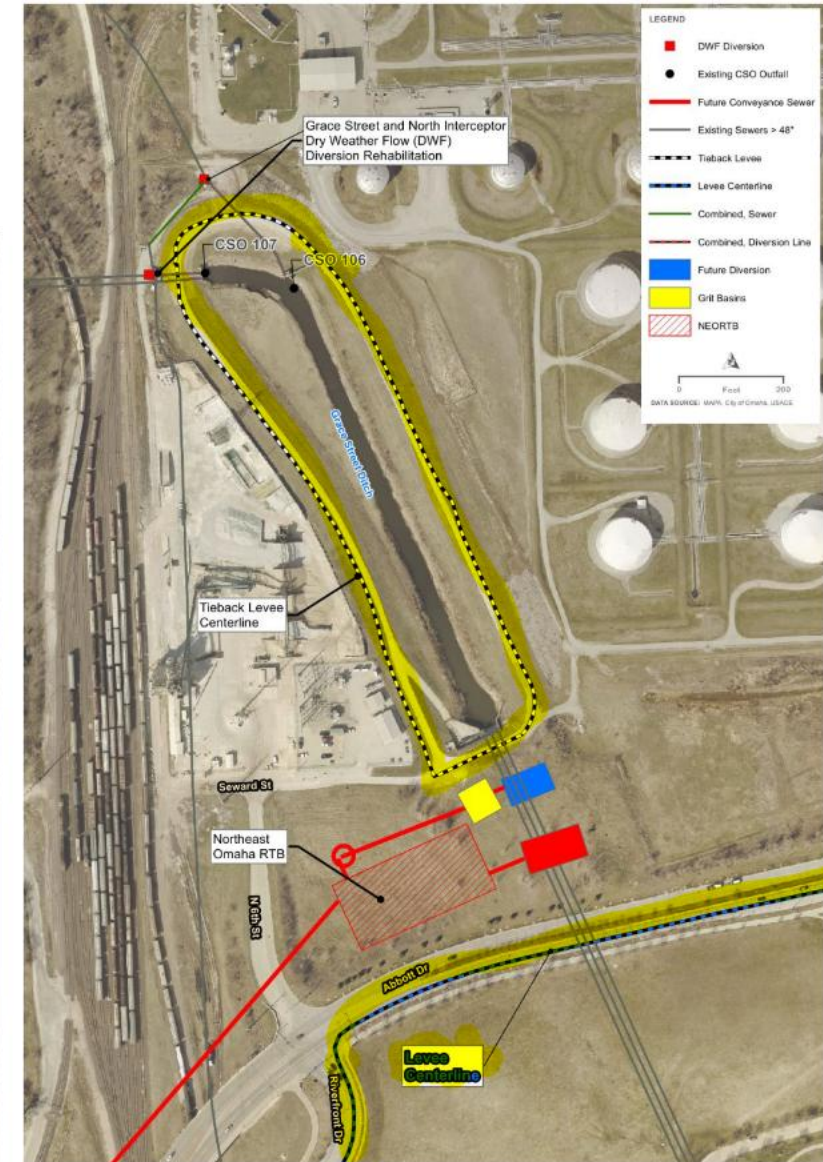
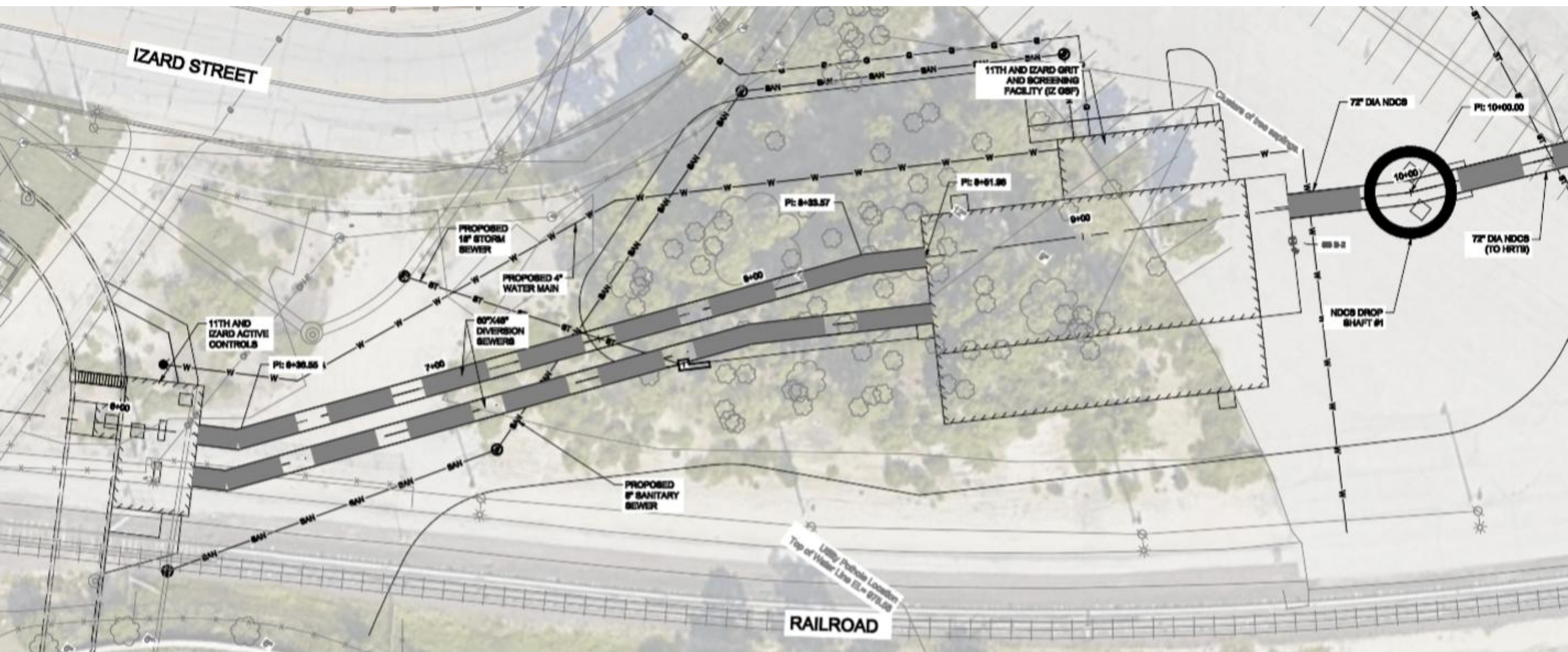


Figure 3-3. Grace Street Tie-Back Levee and Levee Alignment Map

11th/Izard Active Control and GSF Site Plan



Project Division

- Package 1
 - NDCS
 - GNI Drop Shaft (SOE)
 - NDCS Drop Shaft (SOE)
- Package 2
 - IZAC
 - Diversion Sewers
 - IZ GSF
 - NDCS Drop Shaft – complete

Diversion Sewers

IZ GSF

NDCS

GNI Drop Shaft

NDCS

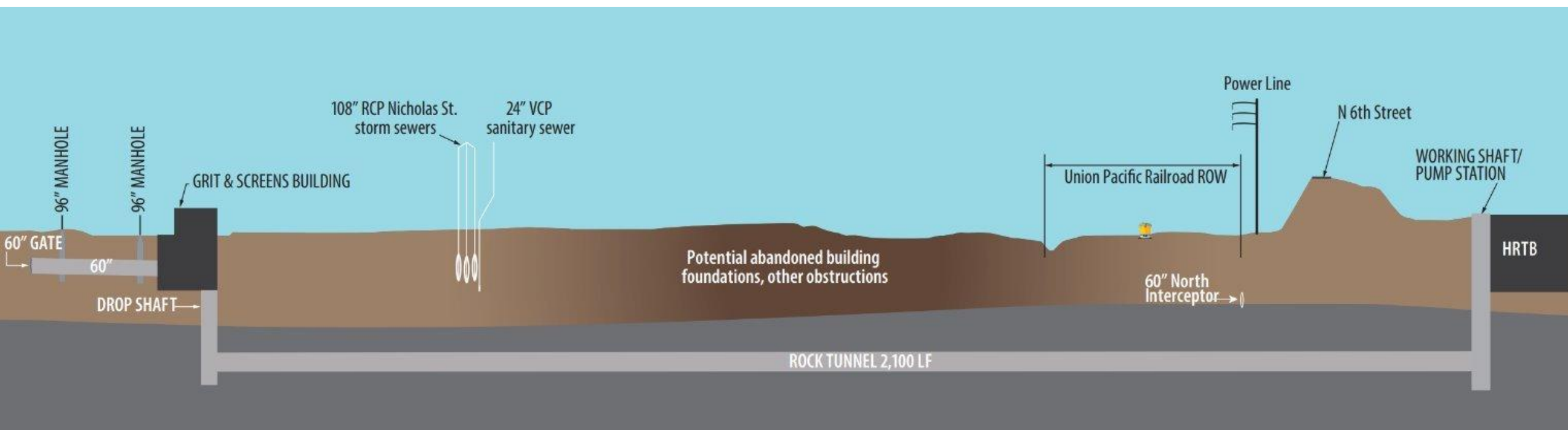
NDCS Drop Shaft
(SOE Shaft only)

Diversion Sewers

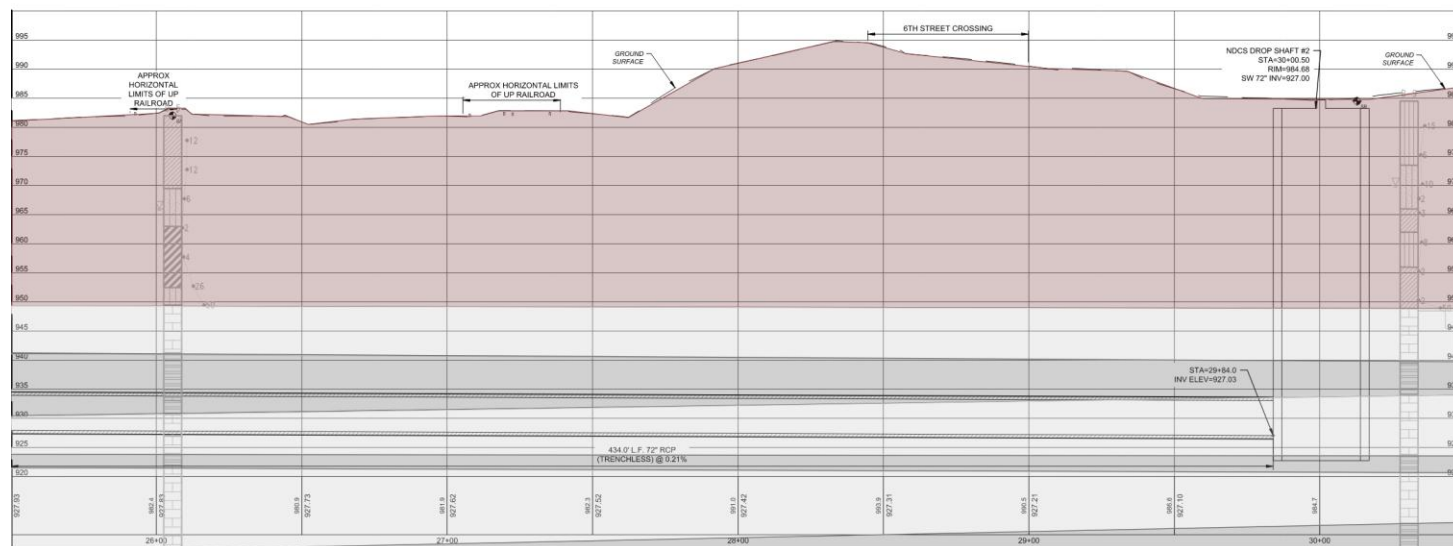
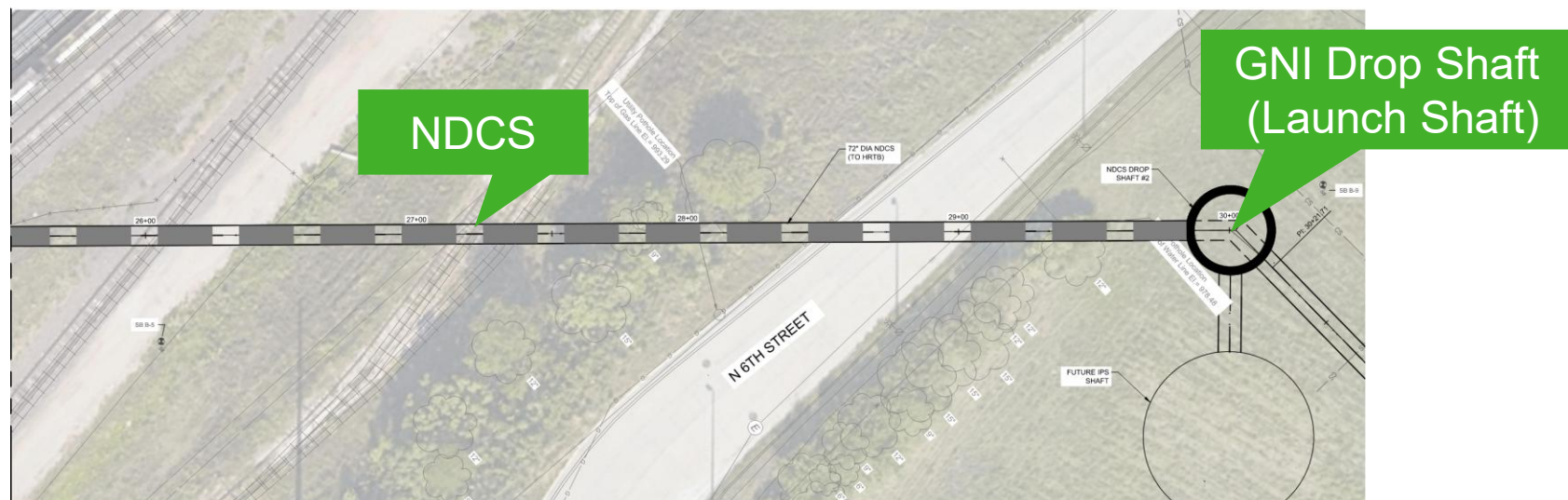
IZAC

North Downtown Conveyance Sewer

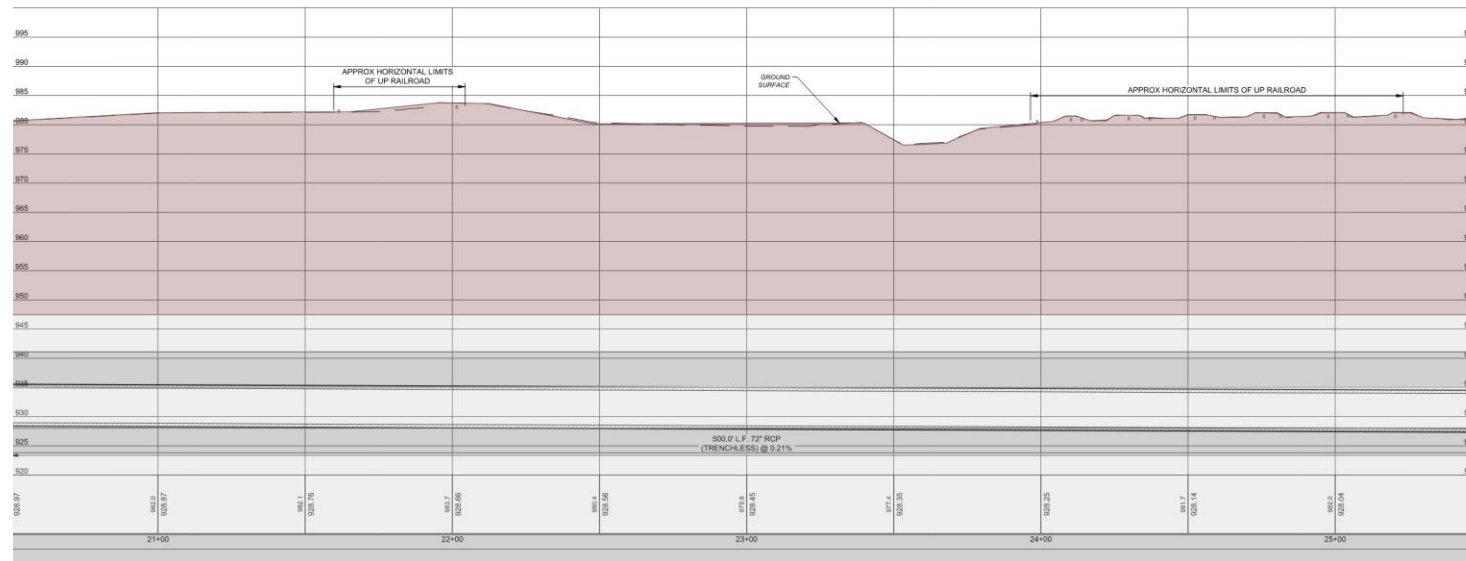
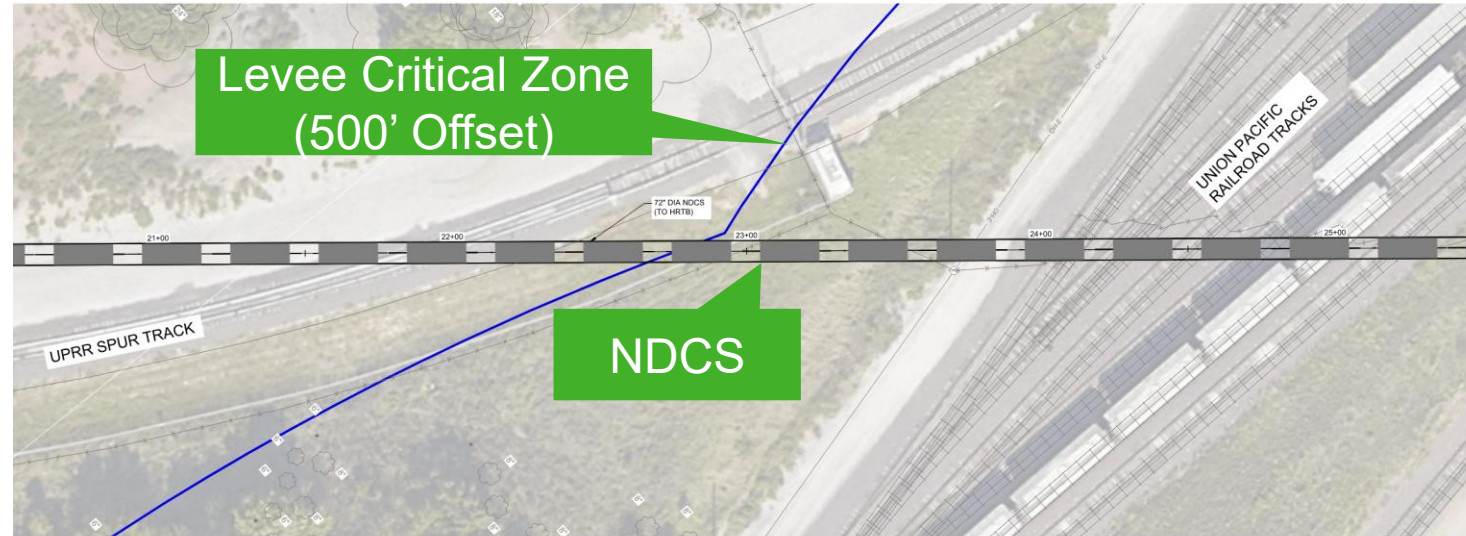
- Secant pile launch shaft
 - 40' diameter
 - 40' overburden and ~30' rock
- Secant pile receiving shaft
 - 28' diameter
 - 35' overburden and ~25' rock
- NDCS Tunnel
 - 2,100 LF rock tunnel
 - 6' ID
 - Straight alignment
 - Railroad crossing



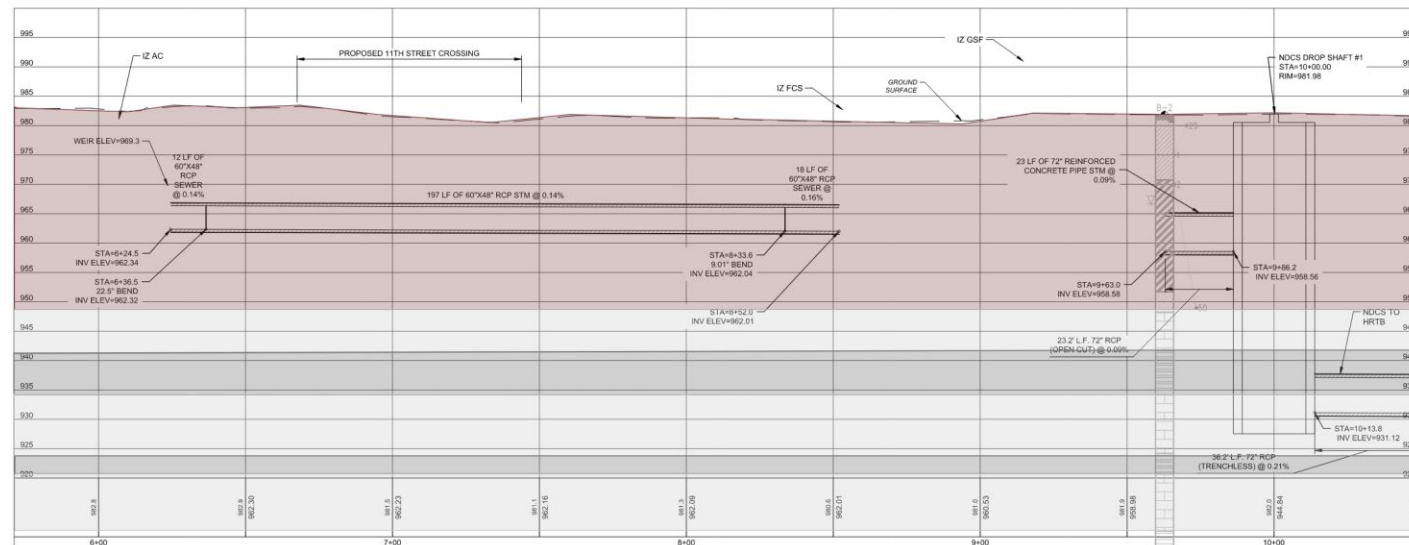
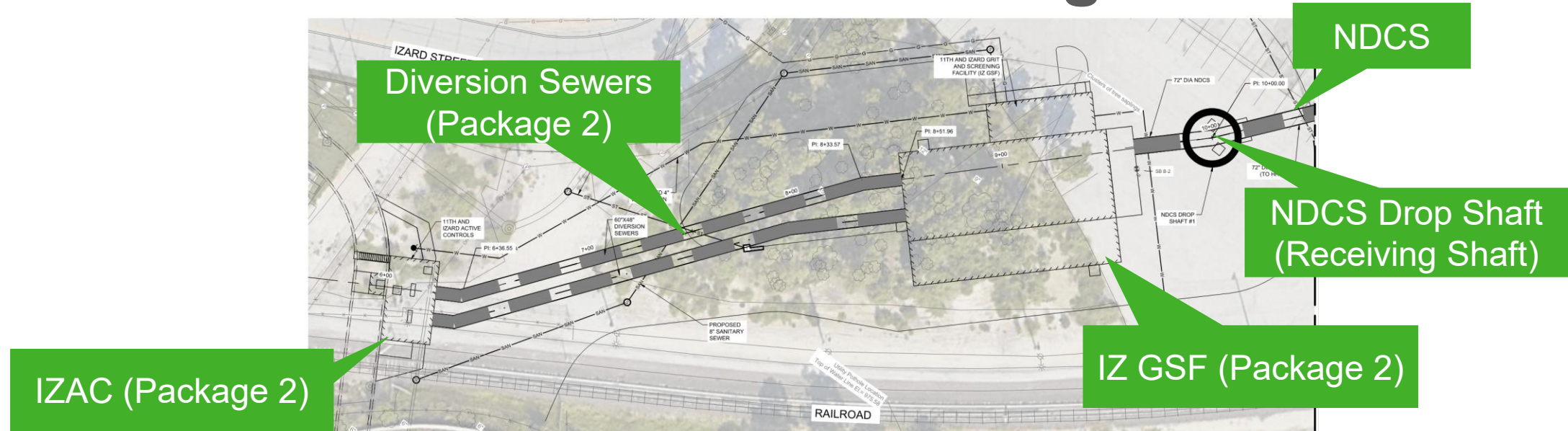
NDCS Plan & Profile at Launch Shaft



NDCS Plan & Profile at Railroad Crossing

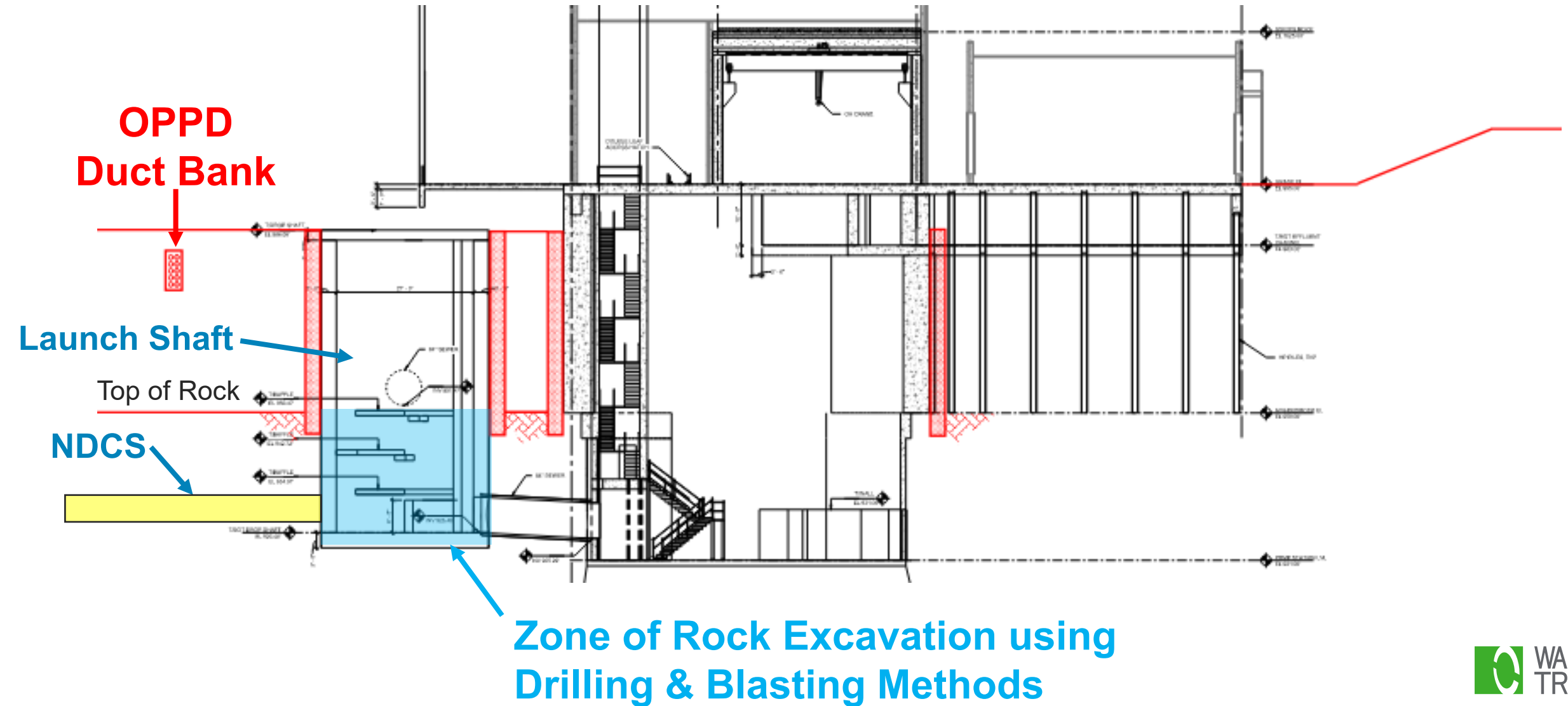


NDCS Plan & Profile at Receiving Shaft





Launch Shaft Blasting



Major Risks

1. Work in proximity to Federal Levee
2. Contaminated soils
3. Site constraints / site access
4. Support of excavation system / Secant Piles
5. Rock excavation / blasting
 - Tunneling/trenchless technology
6. Tunneling under active railroad

Contractor Experience

- Deep excavation,
 - Support of Excavations
- Tunneling Experience Examples

Health and Safety Considerations

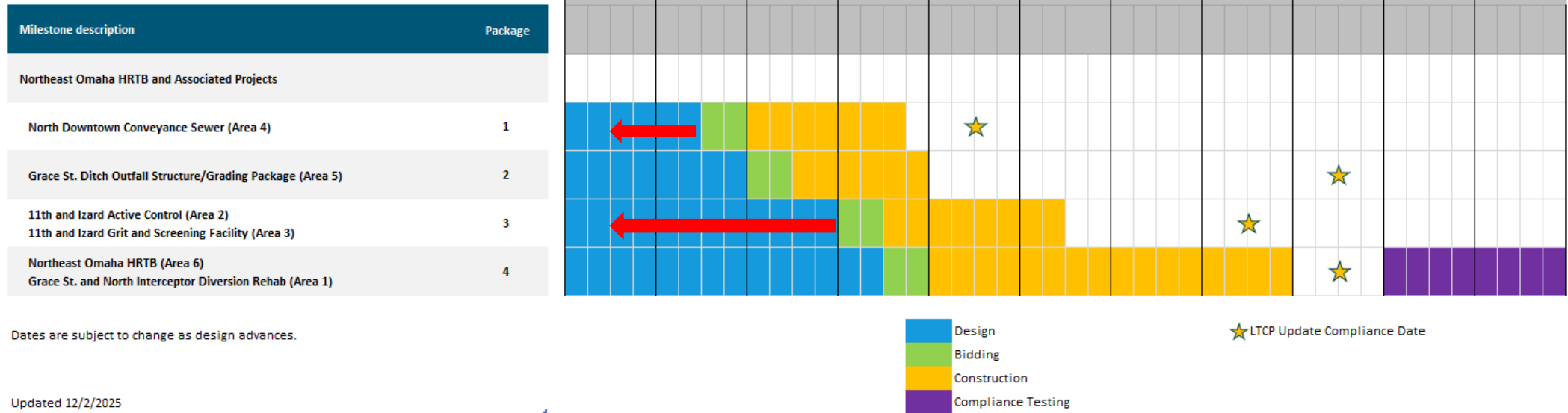
Contaminated Soils

- 40- Hour OSHA HAZWOPER until contaminants are isolated
 - PFAS (Former Fire Training Facility-Gallup; Firefighting-UPRR)
 - Metals (Foundry Sand, C&D Waste, Incinerator Ash)
 - Semi-Volatiles (Foundry Sand, C&D Waste, Incinerator Ash)
- OSHA-Tunnel

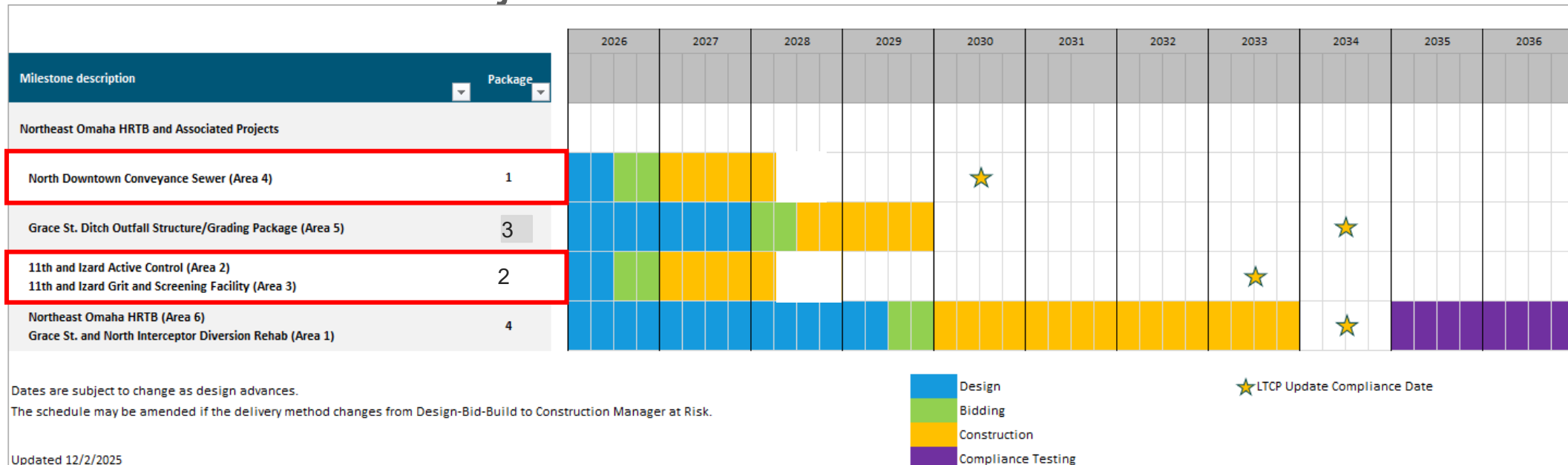
Material Management and Disposal

- Needs to follow NDWEE (Gallup) or EPA requirements (EPA)
 - Location TBD
- Disposal proposed at WM-Pheasant Point
 - Additional sampling to be conducted to verify
- Groundwater disposal to follow appropriate discharge permit
 - NEG673000-2017 (Contaminated City of Omaha)
 - NEG671000-2017 (General Construction Dewatering Permit)
 - Permits require 180 days for review/approval
 - Additional sampling to be completed to verify permit

Previous Project Schedule



11th and Izard - Project Schedule



Design Approach (IZAC & IZ GSF, **NDCS**)

- Design: Now until 6/15/26
 - 30% Submittal Date: 2/2/26
 - 60% Submittal Date: 3/30/26 (Send to Corps for Tech Review & UPRR for Crossing Review)
 - 90% Submittal Date: 6/15/26
 - Permit Submittal Date: 6/15/26
 - USACE, Building Department (pre-review), NDWEE
- Bidding: 7/1/26 to 8/12/26
- NOA:
 - Contractor submit EAP to USACE
- IFC/Conformed Set : 10/1/26
- Contractor NTP: 11/19/26

Contractor Constructability

- Items/issues of concern that come to mind.
- Any questions/comments about project.
- Any ideas for potential changes/improvements



Thank you

- We appreciate your time
- We will stay in contact as these projects progress
 - Approximately April/May, 60% Design point
- If you have any questions or need additional information, please contact us at any time